



**CITY OF SPOKANE**

# **10-YEAR STREET BOND PROGRAM**

**(2006-2015)**

Citizens Streets Advisory Commission (CSAC)  
Bi-Annual Report

October 2007  
Prepared by Citizens Streets Advisory Commission  
Compiled by Ann Deasy-Nolan

## **Table of Contents**

<b>Introduction .....</b>	<b>3</b>
<b>10-Year Street Bond Program Overview .....</b>	<b>4</b>
<b>Completed Street Bond Projects .....</b>	<b>5</b>
<b>10-Year Street Bond Highlights &amp; Accomplishments .....</b>	<b>6</b>
Arterial .....	6
Residential .....	11
Utility Match .....	13
Local Improvement District (LID) .....	15
<b>2008 Street Bond Projects .....</b>	<b>25</b>
<b>Street Bond Projects Scheduled for Construction .....</b>	<b>26</b>
Arterial .....	26
Residential .....	27
Utility Match .....	28
Local Improvement District (LID) .....	28
<b>Advanced/Delayed Projects .....</b>	<b>29</b>
<b>Conclusion .....</b>	<b>31</b>
Appendix A .....	32
Appendix B .....	33
Appendix C .....	43

## Introduction

The 10-Year Street Bond program is overseen by the Citizen Streets Advisory Commission, a volunteer group of citizens who meet monthly to review plans, costs, financial records, timeliness, appropriate use of materials and technology, and other measures related to the maintenance, repair, and rehabilitation of City streets and related structures. CSAC also is responsible for advising and informing the Mayor, City Council, and the citizens of Spokane on all matters related to the above.

Beginning our third year, CSAC understands the importance of communicating with residents and owners along projects before construction begins. The City of Spokane engineers hold Public Meetings on most projects to give the public an opportunity to provide input to the Project Engineers and provide input into the design process as applicable. Additionally, we have a 12-step Tree Process in partnership with the Parks Department to evaluate the condition and replacement of trees as needed. CSAC recognizes that trees are a valuable asset and it is our goal to remove and replace as few trees as necessary.

In order for the CSAC to be good stewards of Street Bond funds and to keep faith with the voters, the members of the Commission ensure that Bond funds are judiciously spent rehabilitating Spokane streets as originally directed by the citizens of Spokane. The Commission has determined that it shall provide bi-annual written reports to the Mayor, City Council, and citizens of Spokane by April 1 and October 1.

### **The members of the Citizens Streets Advisory Commission are\*:**

Dallas Hawkins	Commission Chair	Trust Rep., Timber Products Manufacturing Assoc.
Stanley Stirling	Commission Vice Chair	Principal, Taylor Engineering, Inc.
Phil Barto		Management Consultant, Barto Fleet Engineering Services
Donna Jilbert		Owner, LaDona's Beauty Salon
Max Kuney		President, Max J. Kuney Co.
Kathy Miotke		Director of Insurance, URM
Clay Schueman		Manager, Blue Crick RV
Hal Ellis	Liaison to Community Assembly	Community Volunteer

\*Committee members' terms of service are included as Appendix A.

## 10-Year Street Bond Program Overview

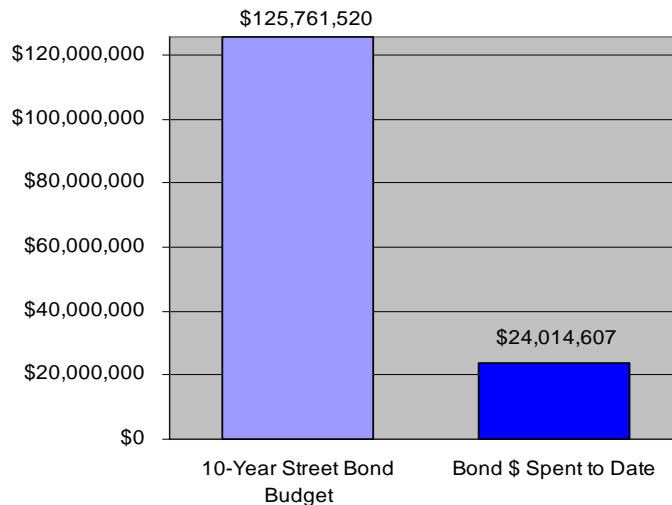
The following table provides a financial overview of the 10-Year Street Bond program, reflecting which category of roads are included, how many miles of repairs are planned, the estimated cost per mile, and how much money will be spent on each category over the life of the program. The budget amounts in this table were modified by CSAC at their September 18, 2007 meeting. The modifications were made to more accurately reflect the increasing cost of construction. For the previous budget and more information on the change please refer to Appendix C.

Program Category	Miles of Repair	Est. Cost Per Mile	Amount
Arterial	38	\$ 2,050,282	\$ 77,910,700
Residential	51	\$ 573,489	\$ 29,247,920
Utility Match	7	\$ 1,000,000	\$ 7,000,000
Local Improvement District	14	\$ 714,286	\$ 10,000,000
Bond Acquisition Cost			\$ 1,602,900
<b>TOTAL</b>	<b>110</b>	<b>\$ 1,066,827</b>	<b>\$125,761,520</b>

The following table gives a financial overview of 10-Year Street Bond program to-date, reflecting which category of roads are included, how many miles of streets were repaired, the cost for each category, and the percentage of the Bond total spent on each category. This financial overview is current as of August 31, 2007, as the accounting is completed, adjustments will be made to projects constructed in 2007 or before.

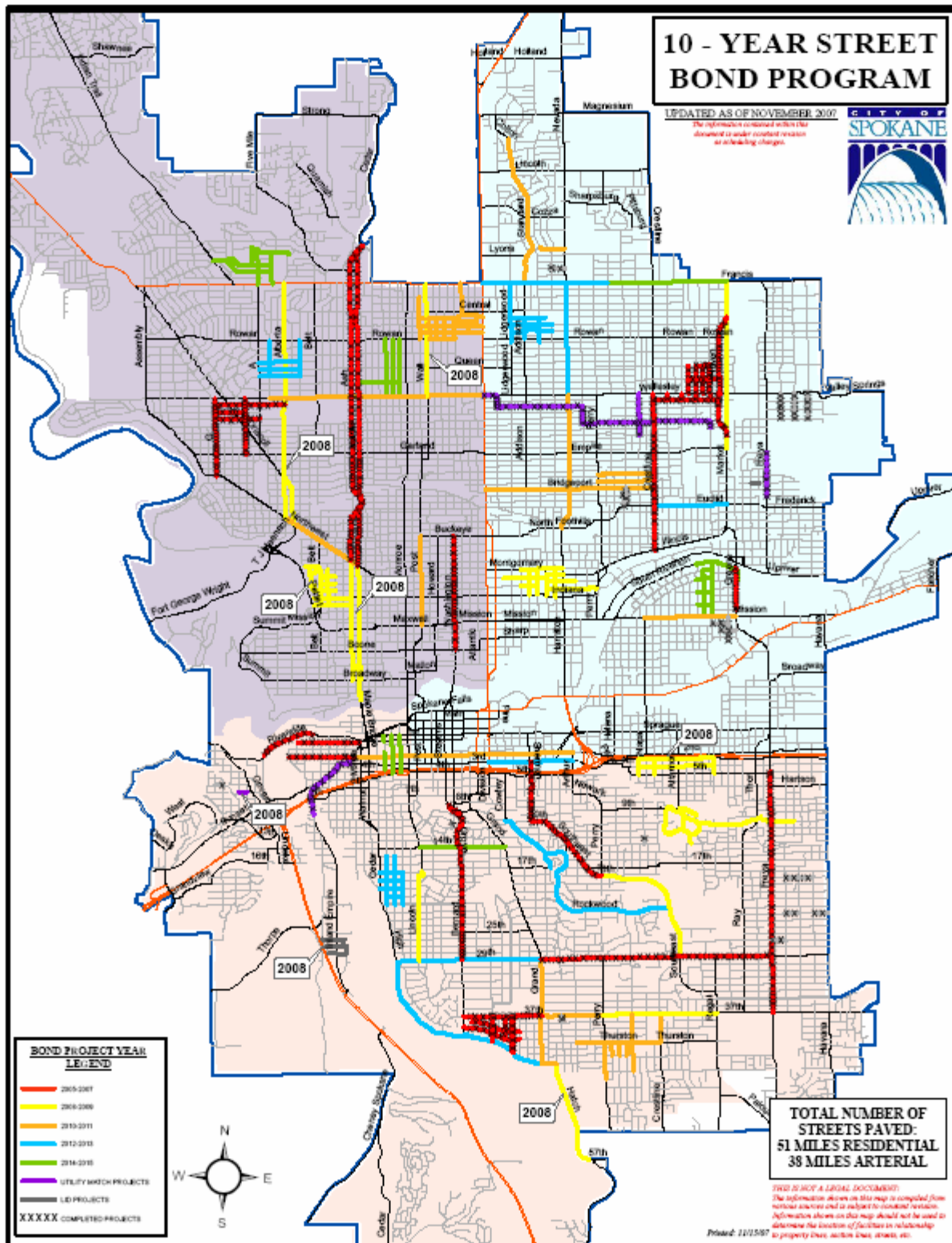
Program Category	Miles of Repair	% of Miles Bond Total	Cost*	% of Cost Bond Total
Arterial	16.6	43.6%	\$ 19,323,876	24.8 %
Residential	9.4	18.4%	\$ 3,049,434	10.4%
Utility Match	1.75	25%	\$ 873,649	12.5%
Local Improvement District	2.21	15.7%	\$ 167,110	16.7%
Bond Acquisition/Admin Cost			\$ 600,538	
<b>TOTAL</b>	<b>29.96</b>		<b>\$ 24,014,607</b>	

\*Adjustments will be made as the projects are finalized and accounting completed.



## Completed Street Bond Projects

The map below shows the 10-Year Street Bond projects that have been completed to date.



## 10-Year Street Bond Highlights & Accomplishments

### ARTERIAL

Arterial street rehabilitation entails removing existing asphalt and unsuitable sub-base from curb-to-curb and replacing with new materials using the best technology so the roadways will not require rehabilitation for many years.

Financial information for the five *complete* Street Bond projects finished in 2007, the *29th Avenue from Southeast Boulevard to Freya Street; Crestline Street from Illinois Avenue to Wellesley Avenue; Maple and Ash Street from Northwest Boulevard to Wellesley Avenue; Southeast Boulevard from Perry Street to Sherman Street and Third Avenue; and Washington Street from Boone Avenue to Buckeye Avenue* is contained in the tables below. Each table shows how much money was budgeted for the project (Budgeted), how much was spent (Actual), and the balance between what was budgeted versus what was spent.

#### 29th Avenue from Southeast Boulevard to Freya Street

☒ On Time

☐ Within Budget

Project #2005177

Construction Start Date: April 2007

Completion Date: June 2007

Replaced water transmission and distribution mains, and rehabilitated/restored roadway, full depth from curb-to-curb of 29th Avenue from Southeast Boulevard to Freya Street. Partial funding was provided by the Water Department.

	Budget	Actual	Balance	Percentage
Engineering/Inspection/Administrative	\$278,447	\$161,270	\$117,177	57.9%
Construction	\$1,113,788	\$1,243,870	(\$130,082)	111.6%
<b>TOTAL</b>	<b>\$1,392,235</b>	<b>\$1,405,140</b>	<b>(\$12,905)</b>	<b>100.9%</b>

\*Adjustments will be made as the project is finalized and accounting completed



## Crestline Street from Illinois Avenue to Wellesley Avenue

☐ On Time

☐ Within Budget

Project #2005050

Construction Start Date: May 2007

Completion Date: Schedule for October 2007

Curb-to-curb road rehabilitation of Crestline Street from Illinois Avenue to Wellesley Avenue.

	Budget	Actual	Balance	Percentage
Engineering/Inspection/Administrative	\$510,000	\$113,846	\$396,154	22.3%
Construction	\$2,040,000	\$	\$2,040,000	
<b>TOTAL</b>	<b>\$2,550,000</b>	<b>\$113,846</b>	<b>\$2,436,154</b>	<b>4.5%</b>

\*Adjustments will be made as the project is finalized and accounting completed



Crestline St.  
from Illinois Ave.  
to Wellesley Ave.





## Maple Street and Ash Street from Northwest Boulevard to Wellesley Avenue

☒ On Time

☒ Within Budget

Project #2005172

Construction Start Date: April 2007

Completion Date: September 2007

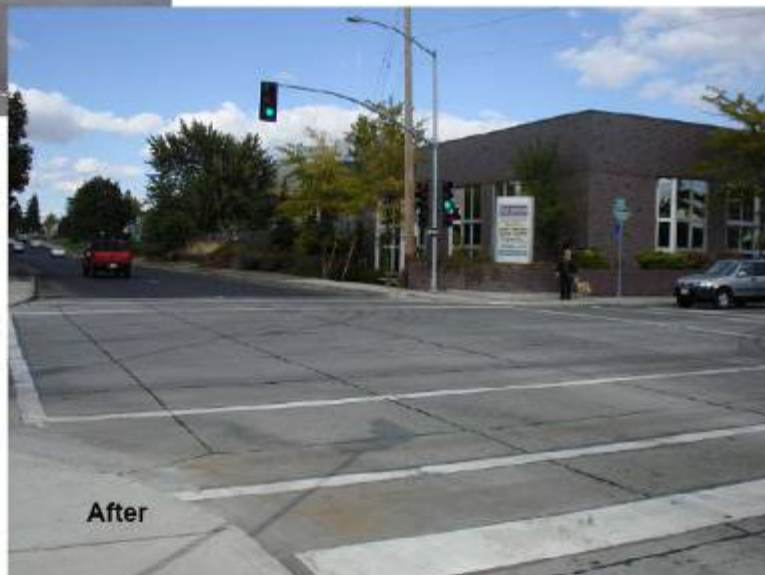
Replaced water mains and rehabilitated/restored roadway, full depth from curb-to-curb of Maple and Ash streets from Northwest Boulevard to Wellesley Avenue, and installed fiber optic communication systems (ITS). The intersections at Garland Avenue and Wellesley Avenue were restored with cement concrete. Partial funding was provided by the Water Department and Spokane Transit Authority.

	Budget	Actual	Balance	Percentage
Engineering/Inspection/Administrative	\$830,160	\$407,147	\$423,013	49%
Construction	\$3,320,642	\$2,900,751	\$419,891	87.4%
<b>TOTAL</b>	<b>\$4,150,802</b>	<b>\$3,307,898</b>	<b>\$842,904</b>	<b>79.7%</b>

\*Adjustments will be made as the project is finalized and accounting completed.



Maple and Ash Streets  
from Northwest Blvd.  
to Wellesley Ave.





## Southeast Boulevard from Perry Street to Sherman Street and Third Avenue

☐ On Time

☐ Within Budget

Project #2005178

Construction Start Date: May 2007

Completion Date: September 2007

A complete full depth curb-to-curb rehabilitation/restoration of Southeast Boulevard from Perry Street to Sherman Street/Third Avenue.

	Budget	Actual	Balance	Percentage
Engineering/Inspection/Administrative	\$359,376	\$202,796	\$156,580	56.4%
Construction	\$1,437,504	\$985,222	\$452,282	68.5%
<b>TOTAL</b>	<b>\$1,796,880</b>	<b>\$1,188,018</b>	<b>\$608,862</b>	<b>66.1%</b>

\*Adjustments will be made as the project is finalized and accounting completed.



Southeast Blvd. from  
Perry St. to  
Third Ave./Sherman St.



## Washington Street from Boone Avenue to Buckeye Avenue

☒ On Time

☐ Within Budget

Project #2005034

Construction Start Date: May 2007

Completion Date: July 2007

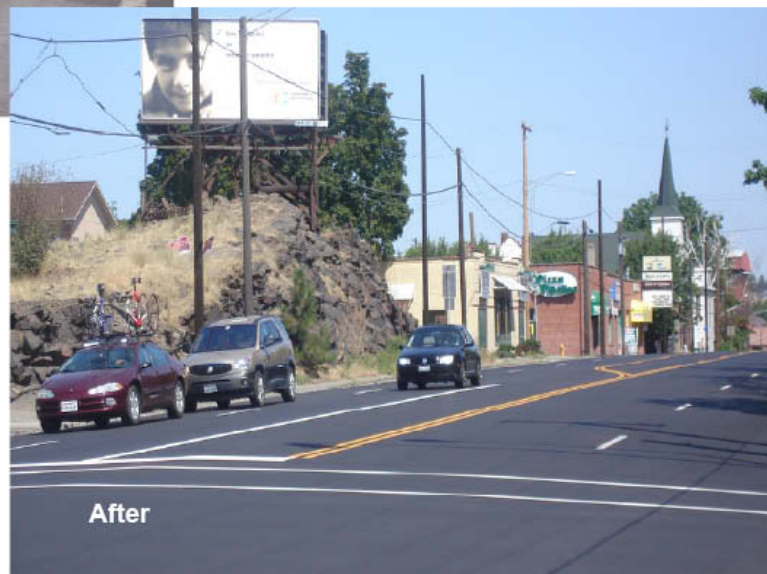
Curb-to-curb rehabilitation of Washington Street from Boone Avenue to Buckeye Avenue.

	Budget	Actual	Balance	Percentage
Engineering/Inspection/Administrative	\$182,000	\$859	\$181,141	.4%
Construction	\$728,000	\$580,496	\$147,504	79.7%
<b>TOTAL</b>	<b>\$910,000</b>	<b>\$581,355</b>	<b>\$328,645</b>	<b>63.8%</b>

\*Adjustments will be made as the project is finalized and accounting completed.



Washington St. from  
Boone Ave. to  
Buckeye Ave.



## RESIDENTIAL

Residential street rehabilitation entails removing existing asphalt and unsuitable sub-base from curb-to-curb and replacing with new materials using the best technology so the roadways will not require rehabilitation for many years, plus additional methods such as chip or fog seals.

Financial information for the two *complete* Street Bond projects finished in 2007, the *Regal Street et al.* and *Browne's Addition/Peaceful Valley* is contained in the tables below.

### Regal Street et al.

☐ On Time

☐ Within Budget

Project #2005091

Construction Start Date: July 2007

Completion Date: Set to be Complete October 2007

Curb-to-curb rehabilitation of residential streets to include full-depth grind and overlay of the top layer of asphalt, and crack/fog sealing. Regal Street from Hoffman Avenue to Queen Avenue; Cook Street from Hoffman Avenue to Wellesley Avenue; Hoffman Avenue from Crestline Street to Haven Street; Lacey Street from Hoffman Avenue to Queen Avenue; Nelson Street from Wellesley Avenue to Queen Avenue; Queen Avenue from Lacey Street to Regal Street; Smith Street from Wellesley Avenue to Queen Avenue; Stone Street from Hoffman Avenue to Wellesley Avenue and Wabash Avenue from Smith Street to Haven Street.

	Budget	Actual	Balance	Percentage
Engineering/Inspection/ Administrative	\$265,200	\$80,486	\$184,714	30.3%
Construction	\$1,060,800	\$	\$1,060,800	%
<b>TOTAL</b>	<b>\$1,326,000</b>	<b>\$80,486</b>	<b>\$1,245,514</b>	<b>6%</b>



Regal St. et al.



## Browne's Addition/Peaceful Valley

☐ On Time

☐ Within Budget

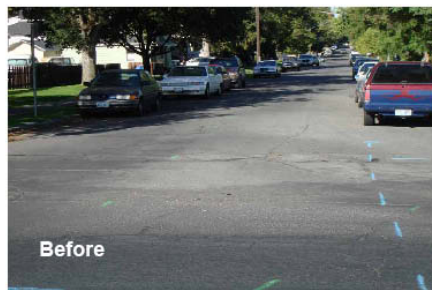
Project #2005090

Construction Start Date: July 2007

Completion Date: September 2007

Full-depth rehabilitation of Riverside Avenue from Hemlock Street to the Marne Bridge, including grinding and overlaying residential streets in Browne's Addition. 1st Avenue from Poplar Street to Maple Street; 2nd Avenue from Coeur d'Alene Street to Maple Street; Riverside Avenue from Marne Bridge to Hemlock Street.

	Budget	Actual	Balance	Percentage
Engineering/Inspection/Administrative	\$237,500	\$97,728	\$139,772	41.2%
Construction	\$712,500	\$	\$712,500	%
<b>TOTAL</b>	<b>\$950,000</b>	<b>\$97,728</b>	<b>\$852,272</b>	<b>10.3%</b>



Browne's Addition/  
Peaceful Valley



## UTILITY MATCH

The Bond funds are joined with the utility funding in order to complete roadway rehabilitation curb-to-curb, instead of just repaving the lane(s) affected by the utility project. This not only frees up Bond money to add more projects to those originally planned, but also reduces traffic impacts for motorists.

The Northeast Transmission Main Phase I and II projects were completed in 2007. The financial information on this project is provided in the table below.

### Northeast Transmission Main Relay (Phase 1)

☐ On Time

☐ Within Budget

Project #2003154

Construction Start Date: March 2007

Completion Date: May 2007

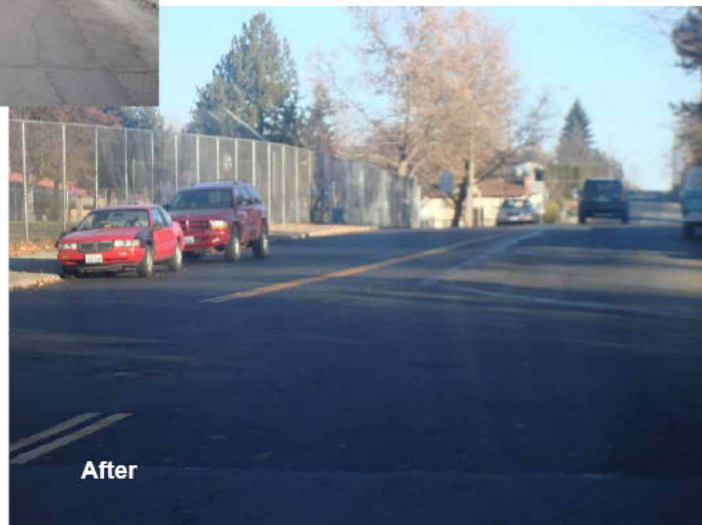
Freya Street from Euclid Avenue to Garland Avenue, Regal Street from Garland Avenue to Rich Avenue, Rich Avenue from Regal Street to Napa Street, Napa Street from Rich Avenue to Wellesley Avenue. Install 24"/30" water transmission main.

	Budget	Actual	Balance	Percentage
Bond Contribution	\$190,500	\$	\$	%
<b>TOTAL</b>	<b>\$190,500</b>	<b>\$</b>	<b>\$</b>	<b>%</b>



Before

### Northeast Transmission Main Phase I



After



## Northeast Transmission Main (Phase 2)

☐ On Time

☐ Within Budget

Project #2006040

Construction Start Date: March 2007

Completion Date: September 2007

Rich Avenue from Napa Street to Morton Street, Morton Street from Rich Avenue to Princeton Avenue, Princeton Avenue from Morton Street to Mayfair Street, Mayfair Street from Princeton Avenue to Wellesley Avenue, Wellesley Avenue from Mayfair Street to Division Street. Install a 24" water transmission main.

	Budget	Actual	Balance	Percentage
Bond Contribution	\$112,600	\$117,525	(\$4,925)	104.3%
<b>TOTAL</b>	<b>\$112,600</b>	<b>\$117,525</b>	<b>(\$4,925)</b>	<b>104.3%</b>



## Northeast Transmission Main Phase II



## **LOCAL IMPROVEMENT DISTRICT (LID)**

There are more than 40 miles of unpaved streets in the City of Spokane. The 10-Year Street Bond Program includes \$10 million under the Local Improvement District (LID) Program to help pay for paving 14 miles of those streets. The program:

- Provides 1/3 funding for frontage streets (which experience a 14% formation failure rate) and an increased funding level for side streets (side streets experience an 86% formation failure rate), not to exceed 50% cumulative for any project. Residents are responsible for paying remaining costs through direct assessment.
- Gives qualified owner-occupants of properties adjacent to the paving project assistance of 50%, 75%, or 100%. The additional funding assistance depends on income and family size, using annually adjusted HUD Section 8 income limits.

In 2007, there were nine LID projects completed: Houston Avenue from Cincinnati Street to Nevada Street; 19th Avenue from Rebecca Street to Cuba Street; 23rd Avenue from Rebecca Street to Myrtle Street and 23rd Avenue from Cuba Street to Havana Street; 6th Avenue from G Street to F Street; Sharp/Sinto Avenues and Fiske Street; Liberty Avenue from Madelia Street to Pittsburg Street and Pittsburg Street from North Foothills Drive to Bridgeport Avenue; Stevens Street from 12th Avenue to Sumner Avenue; Rebecca/Myrtle Streets from Rich Avenue to Wellesley Avenue; and 27th Avenue from Freya Street to Rebecca Street. That is 2.1 miles of LID paving. Financial information is provided in the tables below.



## Houston Avenue from Cincinnati Street to Nevada Street

☐ On Time

☐ Within Budget

Project #99148

Construction Start Date: Spring 2007

Completion Date: Summer 2007

This project paved a dirt street including curbs and sidewalks.

	Budget*	Actual	Balance	Percentage
Project Cost	\$346,385	\$	\$	%
Bond Contribution	\$111,646	\$	\$	%



Houston Ave. from  
Cincinnati St. to  
Nevada St.



## 19th Avenue from Rebecca Street to Cuba Street

☐ On Time

☐ Within Budget

Project #2005176

Construction Start Date: Spring 2007

Completion Date: Summer 2007

This project paved a residential dirt street including installing curbs and sidewalks.

	Budget*	Actual	Balance	Percentage
Project Cost	\$544,113	\$	\$	%
Bond Contribution	\$181,353	\$	\$	%



19th Ave. from  
Rebecca St. to  
Cuba St.



**Sharp Avenue from Haven Street to Greene Street; Sinto Avenue from Haven Street to Fiske Street; and Fiske Street from Boone Avenue to Mission Avenue**

☐ **On Time**

☐ **Within Budget**

Project #2005180

Construction Start Date: Spring 2007

Completion Date: Summer 2007

This project paved a dirt street including curbs and sidewalks.

	<b>Budget*</b>	<b>Actual</b>	<b>Balance</b>	<b>Percentage</b>
Project Cost	\$815,603	\$	\$	%
Bond Contribution	\$329,103	\$	\$	%



Sharp Ave.  
from Haven St.  
to Greene St.



## 6th Avenue from G Street to F Street

☐ On Time

☐ Within Budget

Project #2006041

Construction Start Date: Spring 2007

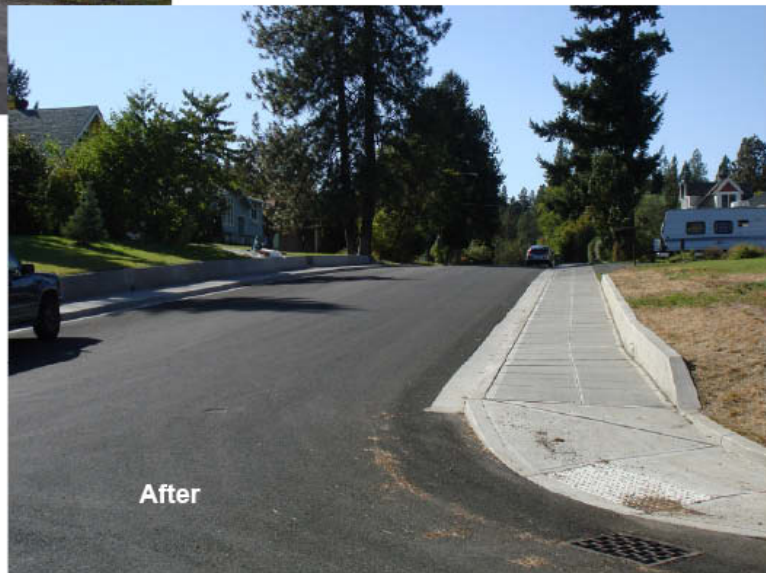
Completion Date: Summer 2007

This project paved a dirt street including curbs and sidewalks.

	Budget*	Actual	Balance	Percentage
Project Cost	\$166,525	\$	\$	%
Bond Contribution	\$55,503	\$	\$	%



6th Ave. from  
G St. to  
F St.



**Liberty Avenue from Madelia Street to Pittsburg Street and Pittsburg Street from North Foothills Drive to Bridgeport Avenue**

☐ On Time

☐ Within Budget

Project #2005225

Construction Start Date: Spring 2007

Completion Date: Summer 2007

This project paved a dirt street including curbs and sidewalks.

	<b>Budget*</b>	<b>Actual</b>	<b>Balance</b>	<b>Percentage</b>
Project Cost	\$439,857	\$	\$	%
Bond Contribution	\$145,768	\$	\$	%



Liberty Ave. from  
Madelia St. to  
Pittsburg St.





## Stevens Street from 12th Avenue to Sumner Avenue

☐ On Time

☐ Within Budget

Project #2006128

Construction Start Date: Spring 2007

Completion Date: Summer 2007

This project paved a dirt street including curbs and sidewalks.

	Budget*	Actual	Balance	Percentage
Project Cost	\$125,692	\$	\$	%
Bond Contribution	\$62,846	\$	\$	%



Stevens St. from  
12th Ave. to  
Sumner Ave.



## Rebecca/Myrtle/Florida Streets from Rich Avenue to Wellesley Avenue

☐ On Time

☐ Within Budget

Project #2006138

Construction Start Date: Spring 2007

Completion Date: Summer 2007

This project paved a dirt street including curbs and sidewalks.

	Budget*	Actual	Balance	Percentage
Project Cost	\$1,069,173	\$	\$	%
Bond Contribution	\$354,907	\$	\$	%



Rebecca/Myrtle/Florida St.  
from Rich Ave.  
to Wellesley Ave.





**23rd Avenue from Rebecca Street to Myrtle Street and 23rd Avenue from Cuba Street to Havana Street**

☐ On Time

☐ Within Budget

Project #2006163

Construction Start Date: Spring 2007

Completion Date: Summer 2007

This project paved a dirt street including curbs and sidewalks.

	Budget*	Actual	Balance	Percentage
Project Cost	\$541,132	\$	\$	%
Bond Contribution	\$171,316	\$	\$	%



23rd Ave. from  
Rebecca St. to Myrtle St.  
and  
23rd Ave. from  
Cuba St. to Havana St.



## 27th Avenue from Freya Street to Rebecca Street

☐ On Time

☐ Within Budget

Project #2006229

Construction Start Date: Spring 2007

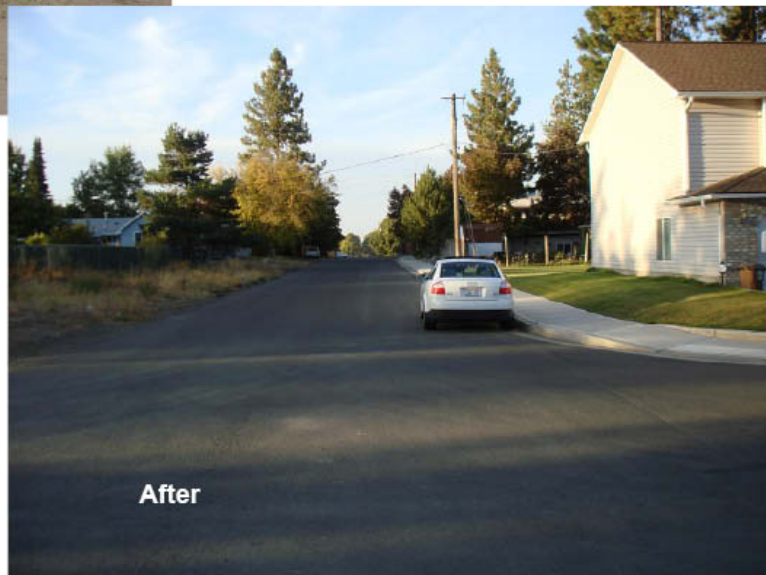
Completion Date: Summer 2007

This project paved a dirt street including curbs and sidewalks.

	Budget*	Actual	Balance	Percentage
Project Cost	\$298,990	\$	\$	%
Bond Contribution	\$83,377	\$	\$	%

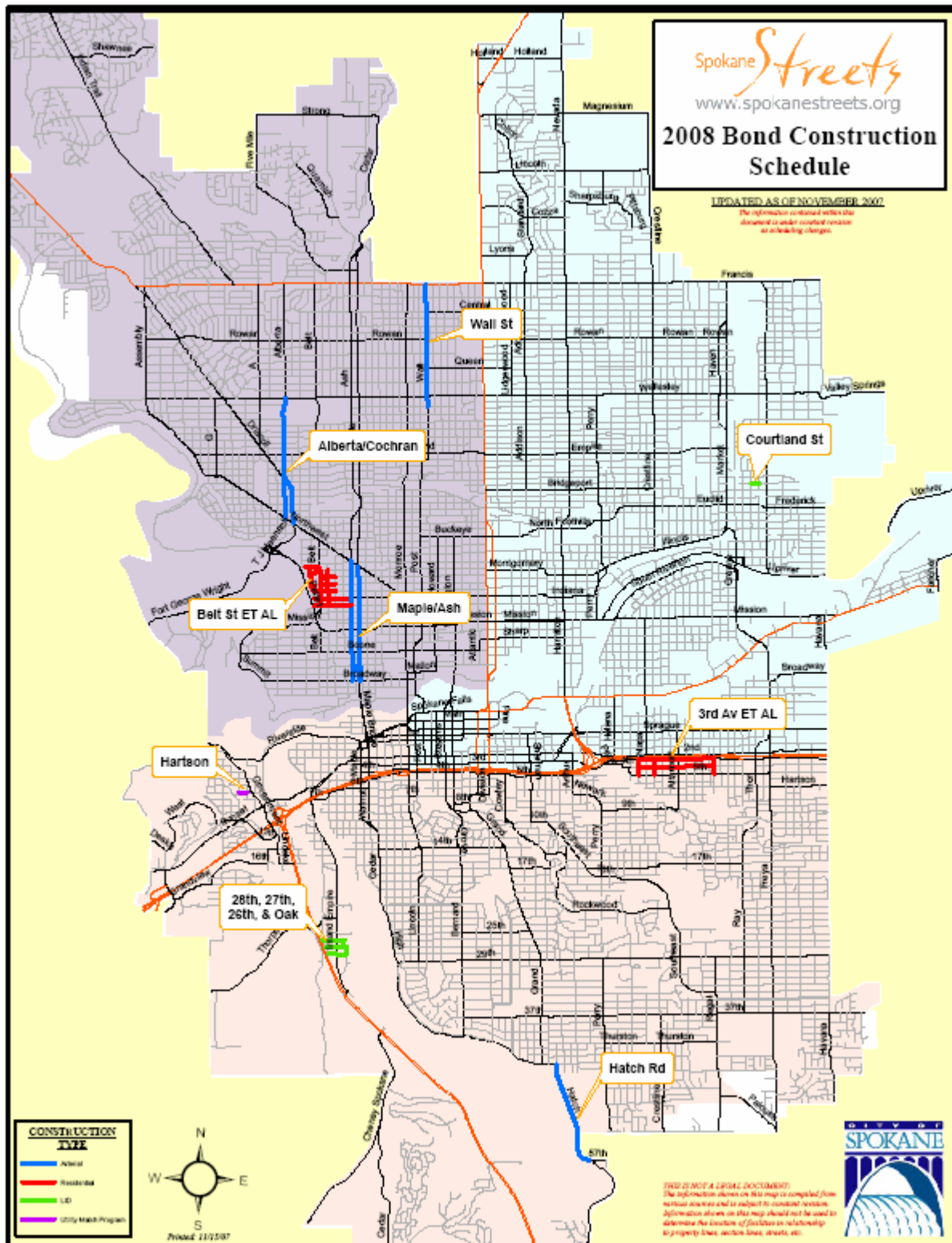


27th Ave. from  
Freya St. to  
Rebecca St.



## 2008 Street Bond Projects

The map below shows 10-Year Street Bond projects scheduled for construction in 2008.



## ARTERIAL

### Maple/Ash Streets from Broadway Avenue to Northwest Boulevard

Project #2005051

Estimated Start Date: **Spring 2008**

Rehabilitate/restore roadway, full depth from curb-to-curb of Maple and Ash streets from Broadway Avenue to Northwest Boulevard.

	<b>Budgeted</b>	<b>Actual</b>	<b>Balance</b>
Engineering/Inspection/Administrative	\$685,083	\$72,655	\$
Construction	\$2,740,332	\$	\$
<b>Total</b>	<b>\$3,425,415</b>	<b>\$</b>	<b>\$</b>

### Alberta Street from Northwest Boulevard to Wellesley Avenue

Project #2007048

Estimated Start Date: **Spring 2008**

Full depth curb-to-curb rehabilitation of Alberta Street from Northwest Boulevard to Wellesley Avenue.

	<b>Budgeted</b>	<b>Actual</b>	<b>Balance</b>
Engineering/Inspection/Administrative	\$318,187	\$57,706	\$
Construction	\$1,272,748	\$	\$
<b>Total</b>	<b>\$1,590,935</b>	<b>\$</b>	<b>\$</b>

### Cochran Street from Northwest Boulevard to Alberta Street

Project #2007048

Estimated Start Date: **Spring 2008**

Full depth from curb-to-curb rehabilitation of Cochran Street from Northwest Boulevard to Alberta Street.

	<b>Budgeted</b>	<b>Actual</b>	<b>Balance</b>
Engineering/Inspection/Administrative	\$117,210	\$	\$
Construction	\$468,841	\$	\$
<b>Total</b>	<b>\$586,051</b>	<b>\$</b>	<b>\$</b>

**Wall Street from Wellesley Avenue to Francis Avenue**

Project #2007101

Estimated Start Date: **Spring 2008**

Full depth curb-to-curb rehabilitation of Wall Street from Princeton Avenue to Francis Avenue.

	<b>Budgeted</b>	<b>Actual</b>	<b>Balance</b>
Engineering/Inspection/Administrative	\$272,077	\$	\$
Construction	\$1,088,307	\$	\$
<b>Total</b>	<b>\$1,360,384</b>	<b>\$</b>	<b>\$</b>

**Hatch Road from 57th Avenue to 43rd Avenue**

Project #2007049

Estimated Start Date: **Spring 2008**

Full depth rehabilitation of Hatch Road from 57th Avenue to 43rd Avenue.

	<b>Budgeted</b>	<b>Actual</b>	<b>Balance</b>
Engineering/Inspection/Administrative	\$379,097	\$	\$
Construction	\$1,084,600	\$	\$
<b>Total</b>	<b>\$1,463,697</b>	<b>\$</b>	<b>\$</b>

**RESIDENTIAL****Third Avenue et al.**

Project #2007050

Estimated Start Date: **Spring 2008**

Curb-to-curb rehabilitation of the following residential streets: Third Avenue from Magnolia Street to Regal Street; Fourth Avenue from Magnolia Street to Regal Street; Crestline Street from Fifth Avenue to Third Avenue; Magnolia Street from Fifth Avenue to Third Avenue; Regal Street from Fifth Avenue to Third Avenue.

	<b>Budgeted</b>	<b>Actual</b>	<b>Balance</b>
Engineering/Inspection/Administrative	\$254,331	\$84	\$
Construction	\$1,017,324	\$	\$
<b>Total</b>	<b>\$1,271,655</b>	<b>\$</b>	<b>\$</b>

**Belt Street et al.**

Project #2007051

Estimated Start Date: **Spring 2008**

Full depth curb-to-curb rehabilitation of Belt Street from Nora Avenue to Montgomery Avenue; Buell Court from Hemlock Street to Montgomery Avenue; Cannon Street from Nora Avenue to Montgomery Avenue; Indiana Avenue from Hemlock Street to Ash Street; Knox Avenue from Belt Street to Cul-de-sac; Mansfield Avenue from Belt Street to Elm Street; Montgomery Avenue from Nettleton Street to Belt Street; Nora Avenue from Hemlock Street to Ash Street; Shannon Avenue from Hemlock Street to Elm Street.

	<b>Budgeted</b>	<b>Actual</b>	<b>Balance</b>
Engineering/Inspection/Administrative	\$289,236	\$508	\$
Construction	\$1,156,944	\$	\$
<b>Total</b>	<b>\$1,446,180</b>	<b>\$</b>	<b>\$</b>

**UTILITY MATCH****Hartson Water Main**

Project #2007171

Estimated Start Date: **Spring 2008**

Hartson Avenue from C Street to D Street. A distribution main was installed in 2007. Full curb-curb rehabilitation and replacement of a temporary patch.

	<b>Budgeted</b>	<b>Actual</b>	<b>Balance</b>
Bond Contribution	\$7,200	\$	\$
<b>Total</b>	<b>\$7,200</b>	<b>\$</b>	<b>\$</b>

**LOCAL IMPROVEMENT DISTRICT (LID)****Courtland Avenue from Thor Street to Ferrall Street**

Project #2006071

Estimated Start Date: **Spring 2008**

Pave and install curbs/sidewalks on Courtland Avenue from Thor Street to Ferrall Street.

	<b>Budget*</b>	<b>Actual</b>	<b>Balance</b>	<b>Percentage</b>
Project Cost	\$156,353	\$	\$	%
Bond Contribution	\$57,573	\$	\$	%

**28th Avenue et al.**

Project #2006147

Estimated Start Date: **Spring 2008**

Pave and install curbs/sidewalks on 28th Avenue from Chestnut Street to Oak Street; 27th Avenue from Chestnut Street to Oak Street; 26th Avenue from Chestnut Street to east of Oak Street; and Oak Street from 28th Avenue to 26th Avenue.

	<b>Budget*</b>	<b>Actual</b>	<b>Balance</b>	<b>Percentage</b>
Project Cost	\$1,069,168	\$	\$	%
Bond Contribution	\$532,332	\$	\$	%

**Advanced/Delayed Projects**

Several 10-Year Street Bond projects have been advanced or delayed since the original plan was developed to rehabilitate Spokane's streets. The decision to advance or delay was based on the following:

- To coordinate with utility projects;
- To advance Bond work if a project is ready for construction and fits the schedule;
- To coordinate with co-funding from Federal, State, or local entities;
- To better spread construction projects out over an area and keep the flow of traffic moving;
- To replace Bond projects that experience delays.

The following projects have been advanced or delayed:\*

\*See Appendix B for a complete list of 10-Year Street Bond program projects.

<b>Project</b>	<b>From</b>	<b>To</b>	<b>Original Construction Date</b>	<b>Revised Construction Date</b>	<b>Reason</b>
Maple/Ash St.	Wellesley Ave.	Cedar Rd.	2006/2007	Completed 2005	Advanced to get head start on Bond projects
Ben Garnett Way/Grove St.	14th Ave.	9th Ave.	2006/2007	Completed 2005	Advanced as part of Washington/Stevens St. project.
Greene St.	Mission Ave.	Spokane River	2006/2007	Completed 2005	Advanced to get head start on Bond projects
3rd Ave./Sunset Blvd./Inland Empire Way	Walnut St.	Inland Empire Way	Not on original schedule	Completed 2006	Utility Match Project approved by CSAC for street bond dollars
29th Ave.	Grand Blvd.	Southeast Blvd.	2014	Completed 2006	Advanced to meet water line schedule and coordinate with Southeast Blvd. project
29th Ave.	Southeast Blvd.	Freya St.	2014	Completed 2007	Advanced to meet water line schedule and coordinate with Southeast Blvd. project



Maple/Ash St.	Northwest Blvd.	Wellesley Ave.	2008/2009	Completed 2007	Advanced
Sherman St.	10th Ave.	3rd Ave.	2010/2011	Completed 2007	Advanced to coordinate with Southeast Blvd. from Perry St. to Sherman St. project
Southeast Blvd.	Perry St.	Sherman St.	2010/2011	Completed 2007	Advanced to coordinate with Sherman St. project from 10th Ave. to 3rd Ave.
Washington St.	Boone Ave. REVISED	Buckeye Ave.	2010/2011	Completed 2007	Advanced to meet up with federally-funded project. The federal project is from Boone Ave. to Buckeye Ave., the Bond project from Indiana Ave. to Buckeye Ave.
Crestline St.	Illinois Ave.	Wellesley Ave.	2008/2009	Completed 2007	Advanced
Maple/Ash St.	Broadway Ave. REVISED	Northwest Blvd. REVISED	2008/2009	2008	Divided Maple/Ash St. from Broadway Ave. to Garland Ave.
Alberta St.	Wellesley Ave.	Francis Ave.	2010/2011	2008	Advanced
Hatch Rd.	57th Ave.	43rd Ave.	2010/2011	2008	Advanced
Cochran St.	Northwest Blvd.	Alberta St.	2010/2011	2008	Advanced
37th Ave.	Perry St.	Regal St.	2010/2011	2009	Advanced
Lincoln St.	14th Ave.	29th Ave.	2012/2013	2009	Advanced and moved from Monroe to Lincoln from 20th to 29th Avenues
Market St.	Garland Ave.	Francis Ave.	2010/2011	2009	Advanced
Wall St.	Wellesley Ave.	Francis Ave.	2010/2011	2009	Advanced
2nd Ave.	Sunset Blvd.	Post St.	2010/2011	2009	Advanced
Francis Ave.	Division St.	Market St.	2008	2014	Delayed pending recommendation from Northside Transportation Study
Southeast Blvd.	29th Ave.	Perry St.	2007/2008	2009	Delayed to allow traffic to flow smoothly during construction of other phases of Southeast Blvd./29th Ave. projects

## Conclusion

Since the City of Spokane voters passed the 10-year Street Bond program in October 2004, it has been my pleasure to serve as the Chair of the Citizen Streets Advisory Commission, (CSAC). The members of CSAC provide their time and expertise to oversee the expenditure of the Street Bond funds and offer our input and recommendations to the Administration and staff concerning the various challenges and issues which may arise as a result of these projects. We continue to work together with Engineering Services and Street Department staff to insure that the best engineering practices as well as material and design standards are always utilized. The construction updates and financial information are presented in a report to the Mayor and City Council in April and October of each year.

The members of the Street Commission believe that it is critical to provide current and relevant information to the public and maintain an open dialog with citizens concerning Street Bond projects. Our primary goal is to make recommendations and support decisions which will rehabilitate the greatest possible number of street miles in Spokane while making appropriate and reasonable accommodations to other stated goals and concerns of our community which may be affected by these projects. We appreciate and support the fact that the rehabilitation and maintenance of our streets are a high priority of the residents of Spokane.

Detailed information concerning all aspects of the 10-Year Street Bond program can be found at [www.spokanestreets.org](http://www.spokanestreets.org). We encourage interested citizens to utilize this resource.

The members of the Citizen Street Advisory Commission respectfully submit this report for the review and comment of the Mayor, City Council and the public. It is our honor and pleasure to provide this report and ongoing oversight on behalf of the City of Spokane to its leaders and citizens.

Dallas Hawkins  
Chairman, Citizen Streets Advisory Commission

## APPENDIX A

### CSAC Member Districts and Terms:

Members:	Representing:	Terms:
Phil Barto	District 3	12/31/11
Dallas Hawkins	District 2	12/31/12
Donna Jilbert	District 1	12/31/07
Clay Schueman	District 3	12/31/08
Max Kuney	District 2	12/31/09
Kathy Miotke	At Large	12/31/10
Stan Stirling	District 1	12/31/10
Hal Ellis	Liaison to Community Assembly	

## APPENDIX B

### 10-Year Street Plan for Rehabilitation of ARTERIAL STREETS & PUBLIC SAFETY CORRIDORS Paves 38 Miles

	PROPOSED YRS 2006- 2007	REVISED YRS				
Area	Street Name		From	To	Cost	Comments
NW	Maple St.	2005	Wellesley Ave. REVISED	Cedar Rd. REVISED	\$2,170,000	Advanced to get head start on Bond projects
SW	Bernard St.	2006	29th Ave.	14th Ave.	\$2,270,000	
NE	Haven St.	2006	Market St. south	Market St. north	\$1,320,000	
NW	Ash St.	2005	Wellesley Ave. REVISED	Cedar Rd. REVISED	\$ 2,750,000	
SE	Freya St.	2006	37th Ave.	Hartson Ave. REVISED.	\$ 2,350,000	
NE	Greene St.	2005	192' N of Mission Ave.	Bridge End (S)	\$ 950,000	
W	3rdAve./Sunset Blvd./Inland Empire Way	2006	Walnut St.	Inland Empire Way	\$ 855,000	New Utility Match project approved by CSAC for Street Bond dollars.
	<b>Subtotal</b>				<b>\$12,665,000</b>	

	<b>PROPOSED YRS 2008- 2009</b>	<b>REVISED YRS</b>				
<b>Area</b>	<b>Street Name</b>		<b>From</b>	<b>To</b>	<b>Cost</b>	<b>Comments</b>
NE	Crestline St.	2007	Illinois Ave.	Wellesley Ave.	\$ 2,550,000	
NW	Maple St.	2007	Northwest Blvd. REVISED	Wellesley Ave. REVISED	\$ 2,090,627	
SE	Southeast Blvd.	2008	29th Ave.	Perry St.	\$ 1,280,000	
NE	Francis Ave.	2014	Division St.	Market St.	\$ 4,530,000	Delay pending recommendations from North Side Transportation Study
NW	Maple/Ash St.	2007	Northwest Blvd. REVISED	Wellesley Ave. REVISED	\$ 2,060,175	
NW	Maple St.	2008	Broadway Ave. REVISED	Northwest Blvd. REVISED	\$1,513,744	
NW	Ash St.	2008	Broadway Ave. REVISED	Northwest Blvd. REVISED	\$1,675,147	
	<b>Subtotal</b>				<b>\$15,699,693</b>	

	<b>PROPOSED YRS 2010- 2011</b>	<b>REVISED YRS</b>				
<b>Area</b>	<b>Street Name</b>		<b>From</b>	<b>To</b>	<b>Cost</b>	<b>Comments</b>
NE	Market St.	2009	Garland Ave.	Francis Ave.	\$ 2,620,000	
NW	Alberta St.		Northwest Blvd.	Wellesley Ave.	\$ 1,480,000	
NW	Wall St.	2009	Wellesley Ave.	Francis Ave.	\$ 940,000	
SE	Sherman St.	2007	8th Ave.	3rd Ave.	\$ 1,050,000	Advanced to include in scope of consultant contract with Southeast Blvd. for efficiency
SE	Southeast Blvd.	2007	Perry St.	Sherman St.	\$ 890,000	Advanced to include in scope of consultant contract with Southeast Blvd. for efficiency
NW	Alberta St.	2008	Wellesley Ave.	Francis Ave.	\$1,490,000	
NW	Washington St.	2007	Boone Ave. REVISED	Buckeye Ave.	\$ 910,000	To meet with Federally funded project from Boone Ave. to Buckeye Ave.
SE	37th Ave.	2009	Perry St.	Regal St.	\$ 1,320,000	
SE	Hatch Rd.	2008	57 <sup>th</sup> Ave.	43 <sup>rd</sup> Ave.	\$ 1,570,000	
NW	Cochran St.	2008	Northwest Blvd.	Alberta St.	\$ 410,000	Advanced
SW	2nd Ave.	2009	Sunset Blvd.	Post St.	\$ 940,000	
	<b>Subtotal</b>				<b>\$13,620,000</b>	

	<b>PROPOSED YRS 2012- 2013</b>	<b>REVISED YRS</b>				
<b>Area</b>	<b>Street Name</b>		<b>From</b>	<b>To</b>	<b>Cost</b>	<b>Comments</b>
SW	Lincoln St.	2009	17th Ave.	29th Ave. REVISED	\$1,368,000	Advanced and moved from Monroe to Lincoln from 20th to 29th Avenues
NE	Euclid Ave.		Crestline St.	Market St.	\$1,110,000	
NW	Northwest Blvd.		Alberta St.	Maple St.	\$1,620,000	
NW	Wellesley Ave.		"A" St.	Division St.	\$3,610,000	
SE	37th Ave.		Grand Blvd.	Perry St.	\$ 580,000	
NW	Post St.		Maxwell Ave.	Buckeye Ave.	\$1,710,000	
SW	2nd Ave.		Post St.	Arthur St.	\$2,520,000	
SW	3rd Ave.		Division St.	Arthur St.	\$1,330,000	
SW	Grand Blvd.		High Dr.	29th Ave.	\$1,300,000	
	<b>Subtotal</b>				<b>\$15,148,000</b>	



	<b>PROPOSED YRS 2014-2015</b>	<b>REVISED YRS</b>				
<b>Area</b>	<b>Street Name</b>		<b>From</b>	<b>To</b>	<b>Cost</b>	<b>Comments</b>
NE	Nevada St.		N. Foothills Dr.	Francis Ave.	\$3,650,000	
SE	29th Ave.	2006	Southeast Blvd. REVISED	Grand Blvd.	\$2,170,000	Advanced to meet water line schedule and coordinate with Southeast Blvd. project
SW	29th Ave.	2007	Grand Blvd. REVISED	Freya St.	\$2,790,000	Advanced as part of Water Main replacement
NE	Mission Ave.	2011	Napa St.	Greene St.	\$1,420,000	Advanced as part of Water Main replacement
SW	High Dr.		Grand Blvd.	29th Ave.	\$2,220,000	
	<b>Subtotal</b>				<b>\$12,250,000</b>	
				<b>Total:</b>	<b>\$69,382,693</b>	

10-Year Street Plan for Rehabilitation of  
**REVISED RESIDENTIAL STREETS**  
Paves 51 Miles

	<b>PROPOSED YRS 2006-2007</b>	<b>REVISED YRS</b>				
<b>Area</b>	<b>Street Name</b>		<b>From</b>	<b>To</b>	<b>Cost</b>	<b>Comments</b>
SW	1 <sup>st</sup> Ave.		Poplar St.	Maple St.	\$ 400,000	
SW	2 <sup>nd</sup> Ave.		Coeur d'Alene St.	Maple St.	\$ 366,000	
SW	37 <sup>th</sup> Ave.		Bernard St.	Grand Blvd.	\$ 722,000	
SW	39 <sup>th</sup> Ave.		Browne St.	Lamonte St.	\$ 356,000	
SW	40 <sup>th</sup> Ave.		Bernard St.	Lamonte St.	\$ 408,000	
SW	Manito Blvd. Northbound		High Dr.	37th Ave.	\$ 41,000	
SW	Skyview Dr. Northbound		High Dr.	37th Ave.	\$ 36,000	
SW	Skyview Dr. Southbound		High Dr.	37th Ave.	\$ 21,000	
SW	Tekoa St.		40th Ave.	37th Ave.	\$ 70,000	
NW	"C" St.		Walton Ave.	Hoffman Ave.	\$ 265,000	
NW	"G" St.		Northwest Blvd.	Wellesley Ave.	\$ 648,000	
NW	Heroy Ave.		"G" St.	"A" St.	\$ 279,000	
NW	Hoffman Ave.		"G" St.	Alberta St.	\$ 419,000	
NW	Princeton Ave.		"G" St.	"C" St.	\$ 197,000	
NW	Riverside Ave.		Bridge End	Hemlock St.	\$ 184,000	
NE	Cook St.		Hoffman Ave.	Wellesley Ave.	\$ 23,000	
NE	Hoffman Ave.		Crestline St.	Haven St.	\$ 487,000	
NE	Lacey St.		Hoffman Ave.	Queen Ave.	\$ 125,000	
NE	Nelson St.		Wellesley Ave.	Queen Ave.	\$ 150,000	
NE	Queen Ave.		Lacey St.	Regal St.	\$ 116,000	
NE	Regal St.		Hoffman Ave.	Queen Ave. (east)	\$ 55,000	
NE	Smith St.		Wellesley Ave.	Queen Avenue	\$ 166,000	
NE	Stone St.		Hoffman Ave.	Wellesley Ave.	\$ 19,000	
NE	Wabash Ave.		Smith St.	Haven St.	\$ 185,000	
	<b>Subtotal</b>				<b>\$5,738,000</b>	

	PROPOSED YRS 2008-2009	REVISED YRS				
Area	Street Name		From	To	Cost	Comment
SE	11th Ave.		Altamont Blvd. (east)	Julia St.	\$ 576,000	
SE	3rd Ave.		Magnolia St.	Regal St.	\$ 512,000	
SE	4th Ave.		Magnolia St.	Regal St.	\$ 467,000	
SE	9th Ave.		Altamont Blvd.	Jaques St.	\$ 125,000	
SE	Altamont Blvd. (west)		E. 2200 Altamont Blvd.	Altamont St.	\$ 277,000	
SE	Cook St.		14th Ave.	Altamont Blvd.	\$ 78,000	
SE	Crestline St.		5th Ave.	3rd Ave.	\$ 80,000	
SE	Magnolia St.		5th Ave.	3rd Ave.	\$ 82,000	
SE	N. Magnolia Blvd. (east)		12th Ave.	Altamont St.	\$ 243,000	
SE	Regal St.		5th Ave.	3rd Ave.	\$ 58,000	
SE	S. Altamont Blvd. (east)		Cook St.	12th Ave.	\$ 106,000	
SE	S. Altamont Blvd. (west)		Cook St.	1100 S. Altamont	\$ 263,000	
SE	Woodfern St.		Altamont Blvd. (south)	Altamont Blvd. (north)	\$ 107,000	
NW	Belt St.		Nora Ave.	Montgomery Ave.	\$ 220,000	
NW	Buell Ct.		Hemlock St.	Montgomery Ave.	\$ 78,000	
NW	Cannon St.		Nora Ave.	Montgomery Ave.	\$ 164,000	
NW	Hemlock St.		Shannon Ave.	Montgomery Ave.	\$ 157,000	
NW	Indiana Ave.		Hemlock St.	Ash St.	\$ 357,000	
NW	Knox Ave.		Belt St.	Cul-de-sac	\$ 112,000	
NW	Mansfield Ave.		Belt St.	Elm St.	\$ 143,000	
NW	Montgomery Ave.		Nettleton St.	Belt St. (North)	\$ 80,000	
NW	Nora Ave.		Hemlock St.	Ash St.	\$ 233,000	
NW	Shannon Ave.		Hemlock St.	Elm St.	\$ 183,000	
NE	Addison St.		Indiana Ave.	Montgomery Ave.	\$ 183,000	
NE	Baldwin Ave.		Astor St.	Perry St.	\$ 372,000	
NE	Cincinnati St.		Indiana Ave.	Montgomery Ave.	\$ 101,000	
NE	Dakota St.		Indiana Ave.	Illinois Ave.	\$ 239,000	
NE	Ermina Ave.		Pearl St. (VAC)	Columbus St.	\$ 394,000	
NE	Illinois Ave.		Dakota St.	Hamilton St.	\$ 170,000	
NE	Montgomery Ave.		Astor St.	Hamilton St. (North)	\$ 475,000	
NE	Standard St.		Indiana Ave.	Montgomery Ave.	\$ 187,000	
	<b>Subtotal</b>				<b>\$6,822,000</b>	

	PROPOSED YRS 2010-2011	REVISED YRS				
Area	Street Name		From	To	Cost	Comment
SE	Crestline St.		Thurston Ave.	37th Ave.	\$ 249,000	
SE	Helena St.		42nd Ave.	Thurston Ave.	\$ 115,000	
SE	Hogan St.		42nd Ave.	Thurston Ave.	\$ 44,000	
SE	Madelia St.		42nd Ave.	Thurston Ave.	\$ 115,000	
SE	Perry St.		45th Ave.	Thurston Ave.	\$ 318,000	
SE	Pittsburg St.		44th Ave.	37th Ave.	\$ 348,000	
SE	Thurston Ave.		Arthur St.	Crestline St.	\$ 666,000	
NW	Atlantic St.		Joseph Ave.	Columbia Ave.	\$ 83,000	
NW	Beacon Ave.		Dakota St.	Nevada St.	\$ 186,000	
NW	Calispel St.		Joseph Ave.	Francis Ave.	\$ 159,000	
NW	Columbia Ave.		Post St.	Division St.	\$ 498,000	
NW	Franklin Ct.		Calispel St.	Atlantic St.	\$ 135,000	
NW	Howard St.		Rowan Ave.	Columbia Ave.	\$ 68,000	
NW	Joseph Ave.		Post St.	Division St.	\$ 427,000	
NW	Nebraska Ave.		Post St.	Division St.	\$ 496,000	
NW	Normandie St.		Nebraska Ave.	Joseph Ave.	\$ 44,000	
NW	Post St.		Rowan Ave.	Dalke Ave.	\$ 254,000	
NW	Rowan Ave.		Wall St.	Whitehouse St.	\$ 248,000	
NW	Stevens St.		Rowan Ave.	Columbia Ave.	\$ 154,000	
NW	Washington St.		Rowan Ave.	Columbia Ave.	\$ 97,000	
NW	Whitehouse St.		Rowan Ave.	Columbia Ave.	\$ 55,000	
NE	Addison St.		Francis Ave.	Standard St.	\$ 176,000	
NE	Bridgeport Ave.		Division St.	Crestline St.	\$1,227,000	
NE	Courtland Ave.		Perry St.	Crestline St.	\$ 205,000	
NE	Glass Ave.		Perry St.	Crestline St.	\$ 415,000	
NE	Standard St.		Addison St.	Colton Pl.	\$1,057,000	
	<b>Subtotal</b>				<b>\$7,839,000</b>	

	PROPOSED YRS 2012-2013	REVISED YRS				
Area	Street Name		From	To	Cost	Comment
SW	17th Ave.		Cedar St.	Madison St.	\$ 77,000	
SW	18th Ave.		Cedar St.	Madison St.	\$ 217,000	
SW	19th Ave.		Cedar St.	Madison St.	\$ 116,000	
SW	20th Ave.		Adams St.	Madison St.	\$ 86,000	
SW	Adams St.		21st Ave.	15th Ave.	\$ 304,000	
SW	Jefferson St.		21st Ave.	15th Ave.	\$ 369,000	
SW	Lincoln St.	2009	20th Ave.	17th Ave. (west)	-\$ 264,000	Advanced and moved to Arterials- combined with Monroe St. from 20th Ave. to 29th Ave.
SW	Madison St.		21st Ave.	17th Ave.	\$ 206,000	
SE	Rockwood Blvd.		Cowley St.	Crestline St.	\$1,764,000	
SE	Upper Terrace Rd.		Rockwood Blvd.	17th Ave.	\$ 141,000	
NW	Alberta St.		Olympic Ave.	Rowan Ave.	\$ 230,000	
NW	Crown Ave.		"A" St.	Nettleton St.	\$ 388,000	
NW	Milton St.		Olympic Ave.	Rowan Ave.	\$ 222,000	
NW	Nettleton St.		Olympic Ave.	Rowan Ave.	\$ 222,000	
NW	Olympic Ave.		"A" St.	Nettleton St.	\$ 171,000	
NW	Queen Ave.		"A" St.	Nettleton St.	\$ 227,000	
NE	Addison St.		Rowan Ave.	Columbia Ave.	\$ 93,000	
NE	Columbia Ave.		Lidgerwood St.	Cul-de-sac (east)	\$ 192,000	
NE	Joseph Ave.		Lidgerwood St.	Cincinnati St.	\$ 135,000	
NE	Lidgerwood St.		North Ave.	Francis Ave.	\$ 414,000	
NE	Nebraska Ave.		Lidgerwood St.	Cincinnati St.	\$ 258,000	
NE	Standard St.		North Ave.	Columbia Ave.	\$ 82,000	
	<b>Subtotal</b>				<b>\$5,914,000</b>	

	PROPOSED YRS 2014-2015	REVISED YRS				
Area	Street Name		From	To	Cost	Comment
SW	14 <sup>th</sup> Ave.		Lincoln St. (south)	Division St. (north)	\$ 466,000	
SW	Adams St.		Alley (south) of 3rd Ave.	Sprague Ave.	\$ 465,000	
SW	Jefferson St.		4th Ave.	Sprague Ave.	\$ 504,000	
SW	Madison St.		4th Ave.	Sprague Ave.	\$ 504,000	
SW	Monroe St.	2008	29th Ave.	20th Ave.	-\$1,104,000	Advanced and moved to Arterials- combined with Lincoln St.
SE	14 <sup>th</sup> Ave.		Division St. (north)	Grand Blvd.	\$ 102,000	
NW	A St.		Francis Ave.	Beacon Ave.	\$ 359,000	
NW	Adams St.		Wellesley Ave.	Rowan Ave.	\$ 328,000	
NW	Audubon St.		Holyoke Ave.	Beacon Ave.	\$ 161,000	
NW	Beacon Ave.		Audubon St.	Alberta St.	\$ 453,000	
NW	Holyoke Ave.		Indian Trail Rd.	Lindeke St.	\$ 460,000	
NW	Houston Ave.		Holyoke Ave.	Lindeke St.	\$ 344,000	
NW	Jefferson St.		Wellesley Ave.	Rowan Ave.	\$ 390,000	
NW	Lindeke St.		Francis Ave.	Beacon Ave.	\$ 297,000	
NW	Madison St.		Wellesley Ave.	Rowan Ave.	\$ 117,000	
NW	Wabash Ave.		Maple St.	Madison St.	\$ 298,000	
NE	Indiana Ave.		Lacey St.	Regal St.	\$ 116,000	
NE	Marshall Ave.		Nelson St.	Regal St.	\$ 43,000	
NE	Nelson St.		Mission Ave.	Marshall Ave.	\$ 163,000	
NE	Nora Ave.		Lacey St.	Regal St.	\$ 68,000	
NE	Regal St.		Mission Ave.	South Riverton	\$ 423,000	
NE	South Crescent Ave.		Lacey St. (north)	Regal St.	\$ 164,000	
NE	South Riverton Ave.		Lacey St.	Ermina Ave.	\$ 506,000	
	<b>Subtotal</b>				<b>\$ 6,731,000</b>	
				<b>Total:</b>	<b>\$33,044,000</b>	



## Original Bond Funding

---

- Arterials	\$65,000,000
- Residential Streets	\$35,000,000
- L.I.D.s	\$10,000,000
- Utility Match	\$7,000,000
- Bond Costs	<u>\$351,000</u>
<b>TOTAL =</b>	<b>\$117,351,000</b>





## Proposed Bond Funding

---

- Arterials	\$77,910,700
- Residential Streets	\$29,247,920
- L.I.D.s	\$10,000,000
- Utility Match	\$7,000,000
- General Expenses	<u>\$1,602,900</u>
<b>TOTAL =</b>	<b>\$125,761,520</b>



## Total Difference

---

Proposed	\$125,761,520
Original	<u>\$117,351,000</u>
<b>Difference =</b>	<b>\$8,410,520</b>

### Source of additional funds

Interest through 2007	\$2,059,160
Projected interest beyond 2007	\$6,000,000
Federal funds & STA	<u>\$988,400</u>
<b>Total =</b>	<b>\$9,047,560</b>

**Program Balance = \$637,040**



## Funding Differences

---

### Arterial

Proposed	\$77,910,700
Original	<u>\$65,000,000</u>

**Total Increase = \$12,910,700**

### Residential

Proposed	\$29,247,920
Original	<u>\$35,000,000</u>

**Total Decrease = (\$5,752,080)**

# Request – CSAC Approve Proposed Bond Funding Allocations

---



- Arterials	\$77,910,700
- Residential Streets	\$29,247,920
- L.I.D.s	\$10,000,000
- Utility Match	\$7,000,000
- General Expenses	<u>\$1,602,900</u>

**Total = \$125,761,520**