



Bi-Annual Report April 2010

Table of Contents

Introduction	1
Letter from the Chair.....	2
Completed Street Bond Projects Map.....	3
2009 Street Bond Highlights & Accomplishments.....	4
Arterial.....	4
Residential.....	9
Utility Match.....	11
Local Improvement District (LID).....	13
2010 Street Bond Projects Map.....	18
2010 Street Bond Projects.....	19
Arterial.....	19
Residential.....	25
Utility Match.....	32
Local Improvement District (LID).....	33
Appendixes	
Appendix A.....	36
Appendix B.....	37

Introduction

Since the 10-Year Street Bond program was approved by voters in 2004, it has been overseen by the Citizen Streets Advisory Commission (CSAC). To keep the faith with the voters that the Bond funds are spent rehabilitating Spokane streets, members of the Commission have limited the scope of Street Bond projects to the costs directly associated with rehabilitating the street curb-to-curb. The Commission provides two reports to the Mayor, City Council, and citizens of Spokane by April 1 and October 1 of each year; the April report includes financial and project information while the October report highlights the completed projects for that construction year.

Citizen Streets Advisory Commission Members:

Dallas Hawkins	Chair	Trust Rep., Timber Products Manufacturing Assoc.
Stanley Stirling	Vice Chair	Principal, Taylor Engineering, Inc.
Phil Barto		Management Consult., Barto Fleet Engineering Svcs.
Donna Jilbert		Owner, LaDonna's Beauty Salon
Max Kuney		President, Max J. Kuney Co.
Kathy Miotke		Director of Insurance, URM
Gary Proctor		Community Volunteer
Hal Ellis	Comm. Assembly Liaison	Community Volunteer
Ann Deasy	Staff Liaison to CSAC	Public Information Coordinator, City of Spokane

Committee members' terms of service are included as Appendix A.

The following table gives an overview of how many miles of streets, and which category of streets have been repaired to date under the 10-Year Street Bond program.

Program Category	Total Miles	Miles Repaired to Date	Percent of Total Miles	Total Cost	Spent to Date	Percent of Bond Spent
Arterial	38	29.44	77%	\$78,621,906	\$43,551,329	55%
Residential	51	16.3	32%	\$29,344,204	\$7,125,766	24%
Utility Match	7	2.33	33%	\$7,000,000	\$284,602	4%
Local Improvement District (LID)	14	5.14	37%	\$10,000,000	\$1,943,090	19%
General Expenses				\$1,678,172	\$1,097,426	65%
TOTAL	110	53.21	48%	\$126,644,282	\$54,002,213	43%

Letter from the Chair

To The Mayor, City Council and the Citizens of Spokane:

This letter is provided as part of the semi annual report from the Citizen Streets Advisory Commission Chairman to the Mayor, City Council and interested citizens. Project oversight and regular reports to the Mayor and City Council are key components of the Citizen Streets Advisory Commission (CSAC) 10-Year Street Bond Program. This rehabilitation program was approved by the voters in 2004 to restore 110 miles of Spokane's streets and to insure that bond funds are properly and judiciously spent. The members of the Street Commission are committed to insure to the greatest possible degree that all of the road repair projects described in the program will be completed and will be built to last for twenty or more years.

Last year we were able to take advantage of low project bids and move some larger projects forward, and we will plan to use similar oversight in our decision making in 2010. As the economy improves construction costs will continue to rise and we anticipate that our conservative approach will have served us well. I am happy to report that at the time of this report, roughly half way through the ten-year program, the Street Bond Program is on-budget.

The Citizen Streets Advisory Commission (CSAC) is a technical accountability commission that meets monthly to review plans, costs, financial records, timeliness, appropriate use of materials and technology, and other measures related to the maintenance, repair, improvement and reconstruction of City streets and related structures. The commission is responsible for advising and informing the Mayor, City Council and the citizens of Spokane on all related matters involving the 10-Year Street Bond Program projects.

The advisory group of citizens is made up of two members from each district and one member appointed at-large. CSAC is entering our sixth year of oversight and reporting. We work with staff to insure that the best engineering practices, materials and design standards are utilized. CSAC will continue to provide input and information to the Mayor, City Council and to the citizens of Spokane on Street Bond projects and issues related to these projects. Our primary goal is to make recommendations and support decisions which will rehabilitate the greatest possible number of street miles while making appropriate accommodations to the other stated goals and concerns of our community which may be affected by these projects.

Since the Street Bond was originally approved, some citizens have expressed a desire to find ways to include various enhancements and improved facilities to specific projects such as bike lanes, pedestrian facilities, additional street trees and traffic calming measures. Since the Street Bond program is dedicated to street rehabilitation, we will continue to do our best, along with the City Council and the new Design Advisory Committee, to help secure outside funding sources to cover the costs of these additional facilities. In 2009, we were able to add significant enhancements to the Market St. project and by working together we were able to do much more than rebuild the street, including such enhancements as additional street trees, LED decorative lighting, stamped concrete sidewalks and benches.

Additionally, members of the Citizen Streets Advisory Commission continue to support legislative and community efforts to regulate, limit or tax the use of studded tires in the State of Washington. There is clear evidence that the use of studded tires directly cause millions of dollars in damage to our local and regional road systems. While we recognize that efforts to restrict or tax studded tires remains unpopular in Eastern Washington, CSAC is convinced that studded tires provide very little if any additional safety or utility while they continue to cause significant and measurable damage to our streets.

It is my pleasure to continue to serve as the Chair of the Citizen Streets Advisory Commission and we look forward to a busy and productive construction season in 2010.

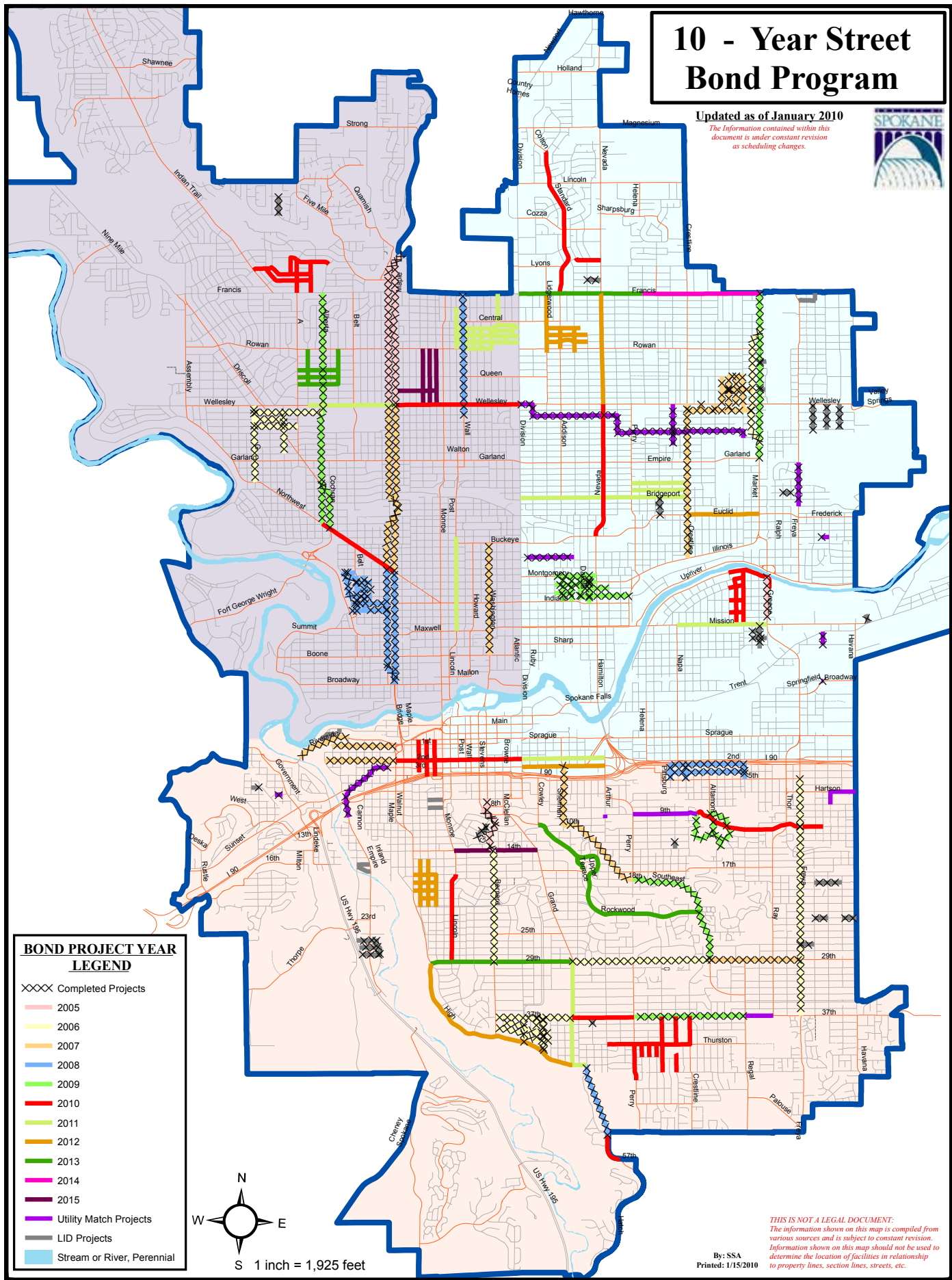
Dallas Hawkins
Chairman
Citizen Streets Advisory Committee

Completed Street Bond Projects

10 - Year Street Bond Program

Updated as of January 2010

The information contained within this document is under constant revision as scheduling changes.



*THIS IS NOT A LEGAL DOCUMENT.
The information shown on this map is compiled from various sources and is subject to constant revision. Information shown on this map should not be used to determine the location of facilities in relationship to property lines, section lines, streets, etc.*

By: SSA
Printed: 1/15/2010

2009 Highlights & Accomplishments

ARTERIAL

Arterial street rehabilitation entails removing existing asphalt and unsuitable sub-base curb-to-curb and replacing it with new material using state-of-the-art technology so the roadways will not require rehabilitation for many years to come.

Below are the five arterial Street Bond projects that were completed in 2009:

- Alberta Street and Cochran Street from Northwest Boulevard to Francis Avenue;
- Francis Avenue and Nevada Street Intersection;
- Market Street from Garland Avenue to Francis Avenue;
- Southeast Boulevard from Perry Street to 29th Avenue; and
- 37th Avenue from Perry Street to Regal Street.

Alberta Street and Cochran Street from Northwest Boulevard to Francis Avenue

✓ On Time

✓ On Budget

Project #2007098

Construction Start: April 2009

Completion: June 2009

The project was a full depth curb-to-curb rehabilitation of Alberta Street and Cochran Street from Northwest Boulevard to Francis Avenue.

	Budget	Actual	Balance	Percentage
Engineering/ Inspection/ Administrative	\$772,259	\$474,663	\$297,596	61%
Construction	\$3,089,037	\$3,377,406	(\$288,369)	109%
TOTAL	\$3,861,296	\$3,852,069	\$9,227	99%

Alberta Street and Cochran Street from
Northwest Boulevard to Francis Avenue



Francis Avenue and Nevada Street Intersection

✓ On Time

Project #2007179

Construction Start: May 2009

Completion: June 2009

The project installed concrete intersection at Francis Avenue and Nevada Street and made improvements to the traffic signals (timing and new signals). Street Bond funds paid for a portion of the intersection, and the remaining funding was provided by Spokane Transit Authority and Arterial Street Funds.

	Budget	Actual	Balance	Percentage
Engineering/ Inspection/ Administrative	\$82,230	\$93,545	(\$11,315)	114%
Construction	\$328,920	\$343,020	(\$14,100)	104%
TOTAL	\$411,150	\$436,565	(\$25,415)	106%

Francis Avenue and Nevada Street Intersection



Market Street from Garland Avenue to Francis Avenue

✓ On Time

Project #2007083

Construction Start: July 2009

Estimated Completion: November 2009

The project was a full depth curb-to-curb rehabilitation of Market Street from Garland Avenue to Francis Avenue using recycled glass. It included replacing existing curbs and sidewalks, and installation of pedestrian lighting and trees from Heroy Avenue to Columbia Avenue. Street Bond funds paid for the street rehabilitation, and the other enhancements, sidewalks and lighting, were paid by other funding sources.

	Budget	Actual	Balance	Percentage
Engineering/ Inspection/ Administrative	\$580,006	\$640,285	(\$60,279)	110%
Construction	\$2,320,023	\$2,392,330	(\$72,307)	103%
TOTAL	\$2,900,029	\$3,032,615	(\$132,586)	105%

Market Street from
Garland Avenue to Francis Avenue



Southeast Boulevard from 29th Avenue to Perry Street

- ✓ On Time
- ✓ On Budget

Project #2005053

Construction Start: April 2009

Completed: August 2009

The project was a full depth curb-to-curb rehabilitation of Southeast Boulevard from 29th Avenue to Perry Street and included the replacement of a 12-inch distribution main from 29th Avenue to Rockwood Boulevard, 8-inch distribution main from Rockwood Boulevard, and 6-inch distribution main from 18th Avenue to Perry Street.

	Budget	Actual	Balance	Percentage
Engineering/ Inspection/ Administrative	\$411,183	\$479,741	(\$68,558)	117%
Construction	\$1,644,731	\$1,389,478	\$255,253	84%
TOTAL	\$2,055,914	\$1,869,219	\$186,695	91%

Southeast Boulevard from
29th Avenue to Perry Street



37th Avenue from Perry Street to Regal Street

- ✓ On Time
- ✓ On Budget

Project #2007148

Construction Start: July 2009

Completion: October 2009

The project was a full depth curb-to-curb rehabilitation of 37th Avenue from Perry Street to Regal Street and included the installation of new curbs and sidewalks from Crestline Street to Mt. Vernon Street and replacement of a 30-inch transmission main from Crestline Street to Regal Street, and a 12-inch distribution main and 24-inch transmission main from Perry Street to Crestline Street. The curb and sidewalk installation was funded by Spokane Transit Authority and water mains by the City Water

	Budget	Actual	Balance	Percentage
Engineering/ Inspection/ Administrative	\$285,496	\$387,175	(\$101,679)	136%
Construction	\$1,141,986	\$587,710	\$554,276	51%
TOTAL	\$1,427,482	\$974,885	\$452,597	68%

37th Avenue from
Perry Street to Regal Street



RESIDENTIAL

Altamont Boulevard from 11th Avenue to Ninth Avenue, et al.

✓ On Time

Project #2008117

Construction Start: June 2009

Completed: August 2009

The project included a combination of grinding and overlaying the top layer of asphalt and a full-depth curb-to-curb rehabilitation of Altamont Boulevard from 11th Avenue to Ninth Avenue; Cook Street from Altamont Boulevard to 14th Avenue; Woodfern Street at Altamont Boulevard; and Ninth Avenue from Altamont Boulevard to Jaque Street.

	Budget	Actual	Balance	Percentage
Engineering/ Inspection/ Administrative	\$151,835	\$158,855	(\$7,020)	105%
Construction	\$607,342	\$647,994	(\$40,652)	107%
TOTAL	\$759,177	\$806,849	(\$47,672)	106%

Altamont Boulevard from
11th Avenue to Ninth Avenue, et al.



Montgomery Avenue from Astor Street to Hamilton Street, et al.

✓ On Time

✓ On Budget

Project #2008118

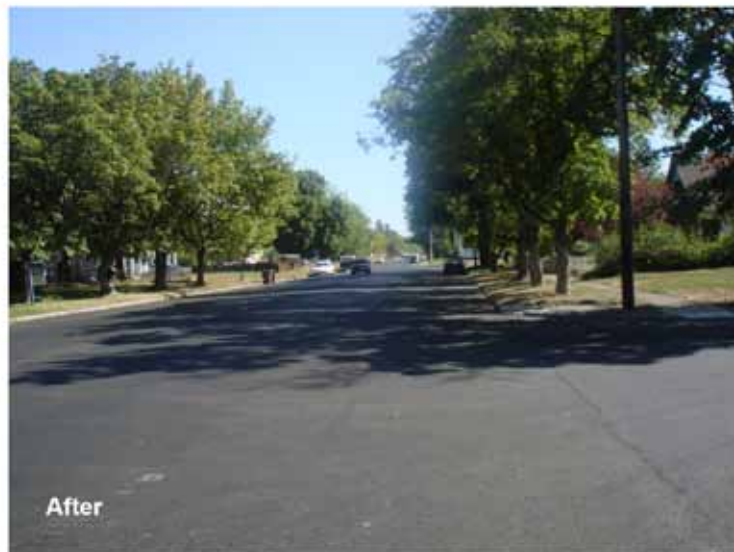
Construction Start: July 2009

Completed: September 2009

The project included a combination of grinding and overlaying top layer of asphalt and full-depth curb-to-curb rehabilitation of Montgomery Avenue from Astor Street to Hamilton Street; Illinois Avenue from Dakota Street to Hamilton Street; Ermina Avenue from Astor Street to Columbus Street; Baldwin Avenue from Astor Street to Perry Street; Addison Street, Standard Street, Dakota Street; and Cincinnati Street from Indiana Avenue to Montgomery Avenue.

	Budget	Actual	Balance	Percentage
Engineering/ Inspection/ Administrative	\$391,704	\$156,846	\$234,858	40%
Construction	\$1,566,814	\$1,184,516	\$382,298	76%
TOTAL	\$1,958,518	\$1,341,362	\$617,156	68%

Montgomery Avenue from
Astor Street to Hamilton Street, et al.



UTILITY MATCH

Buckeye Avenue and Grace Avenue from Ruby Street to Upriver Drive

✓ On Time

Project #2007160

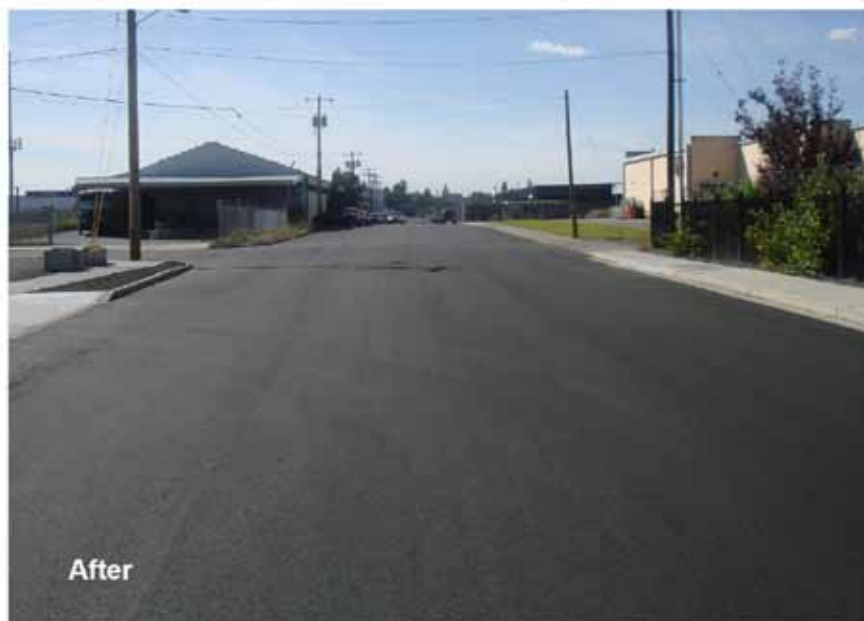
Construction Start: May 2009

Completed: August 2009

The project replaced the existing 24-inch water main with a 36-inch water main, and paved the remaining part of the street for a full curb-to-curb rehabilitation of Jackson Avenue from Ruby Street to Astor Street; and Grace Avenue from Julia Street to Myrtle Street.

	Budget	Actual	Balance	Percentage
Project Cost	\$4,620,700	\$	\$	%
Bond Contribution	\$259,000	\$	\$	%

Buckeye Avenue and Grace Avenue from Ruby Street to Upriver Drive



Broadway Avenue from Alki Way to 160 Feet East of Alki Way; and Julia Street from Boone Avenue to Trent Avenue

Project #2008143

Construction Start: October 2009

Estimated Completion: August 2010

The project paved the remaining part of the street for a full curb-to-curb rehabilitation of Broadway Avenue from Alki Way to 160 feet east of Alki Way and Julia Street from Boone Avenue to Trent Avenue.

	Budget	Actual	Balance	Percentage
Project Cost	\$53,000	\$	\$	%
Bond Contribution	\$53,000	\$	\$	%

Broadway Avenue from Alki Way to Alki Way



LOCAL IMPROVEMENT DISTRICT (LID)

E Street from Trinity Avenue to Horizon Avenue

✓ On Time

Project #2007040

Construction Start: September 2009

Completion: October 2009

The project paved E Street from Trinity Avenue to Horizon Avenue and installed curbs and sidewalks.

	Budget	Actual	Balance	Percentage
Project Cost	\$648,000	\$	\$	%
Bond Contribution	\$140,880	\$	\$	%

E Street from
Trinity Avenue to Horizon Avenue



Hough Street from Trent Avenue to the End of Street

✓ On Time

Project #2007084

Construction Start: September 2009

Completion: October 2009

The project paved Hough Street from Trent Avenue to the end of street and installed curbs and sidewalks.

	Budget	Actual	Balance	Percentage
Project Cost	\$305,862	\$	\$	%
Bond Contribution	\$136,594	\$	\$	%

Hough Street from
Trent Avenue to End of Street



Jackson Avenue from Astor Street to Standard Street

✓ On Time

✓ On Budget

Project #2007160

Construction Start: May 2009

Completion: August 2009

The project paved the street, installed curbs and sidewalks of Jackson Avenue from Astor Street to Standard Street.

	Budget	Actual	Balance	Percentage
Project Cost	\$363,900	\$154,263	\$209,637	42%
Bond Contribution	\$203,800	\$44,938	\$158,862	22%

Jackson Avenue from
Astor Street to Standard Street



Rowan Avenue, Sanson Avenue, and Everett Avenue from Market Street East to the Railroad Right-of-Way

✓ On Time

Project #2008140

Construction Start: September 2009

Estimated Completion: October 2009

The project paved and installed curbs and sidewalks on Rowan Avenue, Sanson Avenue, and Everett Avenue from Market Street east to the railroad right-of-way.

	Budget	Actual	Balance	Percentage
Project Cost	\$349,291	\$	\$	%
Bond Contribution	\$115,390	\$	\$	%

Sanson Avenue from
Market Street to the
Railroad Right-of-Way



Wabash Avenue and Broad Avenue from Market Street East to the Railroad Right-of-Way

✓ On Time

Project #2008141

Construction Start: September 2009

Estimated Completion: October 2009

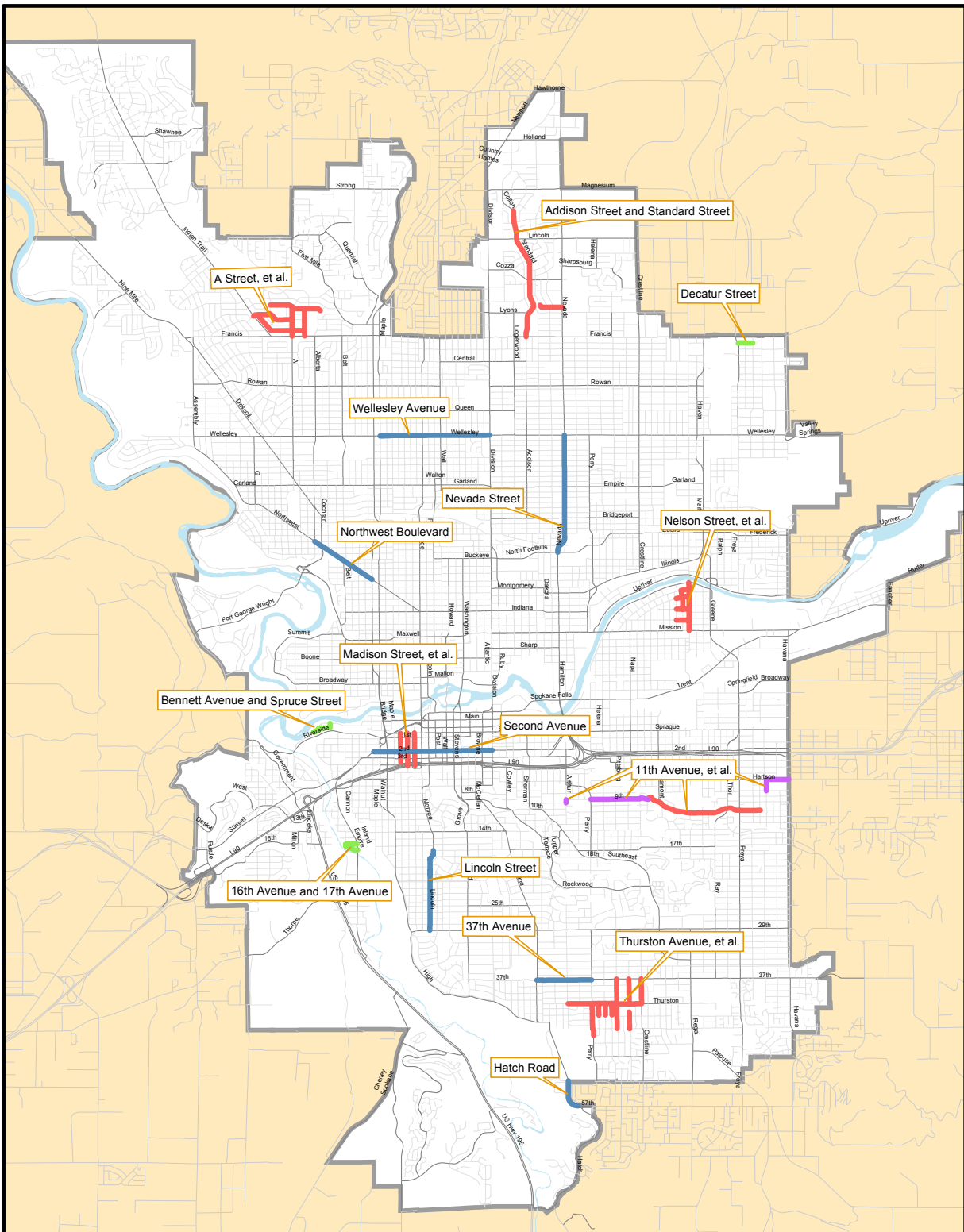
The project paved and installed curbs and sidewalks of Rowan Avenue, Sanson Avenue, and Everett Avenue from Market Street east to the railroad right-of-way.

	Budget	Actual	Balance	Percentage
Project Cost	\$111,721	\$	\$	%
Bond Contribution	\$34,975	\$	\$	%

Wabash Avenue from
Market Street to the
Railroad Right-of-Way



2010 Street Bond Projects



City of Spokane 2010 Bond Construction Schedule

DATE: January 15, 2010

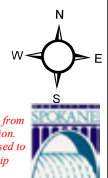
Prepared by:SSA

Spokane *Streets*
www.spokanestreets.org

0 2,000 4,000 6,000 8,000 10,000
Feet

Legend

- Arterial Bond Projects
- LID Bond Projects
- Residential Bond Projects
- UMP



THIS IS NOT A LEGAL DOCUMENT:
The information shown on this map is compiled from various sources and is subject to constant revision. Information shown on this map should not be used to determine the location of facilities in relationship to property lines, section lines, streets, etc.

ARTERIAL

Hatch Road from 57th Avenue to 54th Avenue

Project #2008112

Construction Start: Spring 2010

Estimated Completion: Fall 2010

The project will be a full depth curb-to-curb rehabilitation of Hatch Road from 57th Avenue to 54th Avenue.

	Budget	Actual	Balance
Engineering/ Inspection/ Administrative	\$83,564	\$36,621	\$46,943
Construction	\$334,255	\$	\$334,255
TOTAL	\$417,819	\$36,621	\$381,198

Hatch Road from 57th Avenue to 54th Avenue



Lincoln Street from 17th Avenue to 29th Avenue

Project #2007144

Construction Start: March 2010

Estimated Completion: Fall 2010

The project will be a full depth curb-to-curb rehabilitation of Lincoln Street from 17th Avenue to 29th Avenue including adding curb extensions with storm water drainage in various locations that drain the treated water into the Cannon Hill Park pond.

	Budget	Actual	Balance
Engineering/ Inspection/ Administrative	\$299,219	\$236,255	\$62,964
Construction	\$1,196,874	\$	\$1,196,874
TOTAL	\$1,496,093	\$236,255	\$1,259,838

Lincoln Street from 17th Avenue to 29th Avenue



Nevada Street from North Foothills Drive to Wellesley Avenue

Project #2008144

Construction Start: Spring 2010

Estimated Completion: Fall 2010

The project will be a full depth curb-to-curb rehabilitation of Nevada Street from North Foothills Drive to Wellesley Avenue.

	Budget	Actual	Balance
Engineering/ Inspection/ Administrative	\$458,748	\$35,522	\$423,226
Construction	\$1,834,991	\$	\$1,834,991
TOTAL	\$2,293,739	\$35,552	\$2,258,187

Nevada Street from North Foothills Drive to Wellesley Avenue



Northwest Boulevard from Alberta Street to Maple Street

Project #2008114

Construction Start: Spring 2010

Estimated Completion: Fall 2010

The project will be a full depth curb-to-curb rehabilitation of Northwest Boulevard from Alberta Street to Maple Street.

	Budget	Actual	Balance
Engineering/ Inspection/ Administrative	\$304,034	\$33,795	\$270,239
Construction	\$1,216,134	\$	\$1,216,134
TOTAL	\$1,520,168	\$39,795	\$1,480,373

Northwest Boulevard from Alberta Street to Maple Street



Second Avenue from Sunset Boulevard to Division Street

Project #2008113

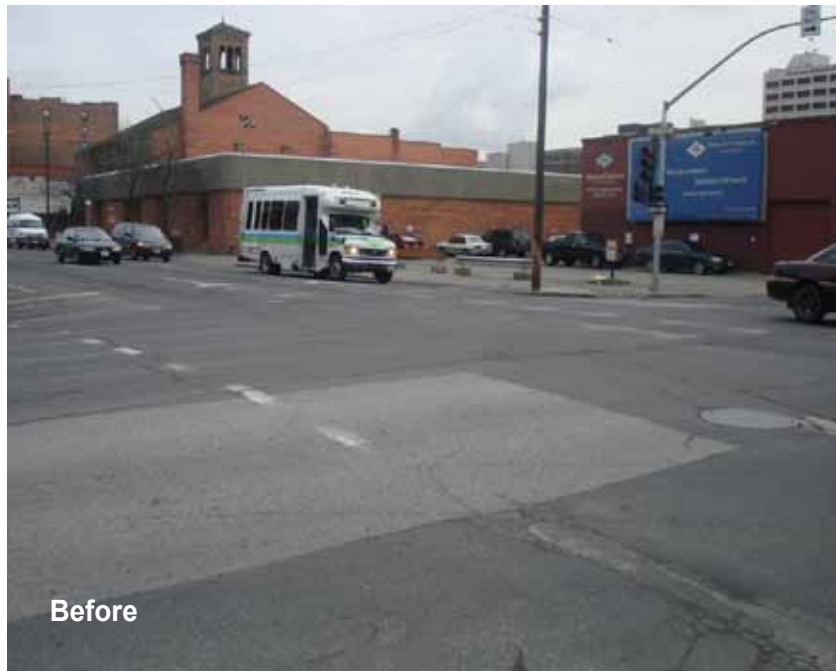
Construction Start: Spring 2010

Estimated Completion: Fall 2010

The project will be a full depth curb-to-curb rehabilitation of Second Avenue from Sunset Boulevard to Division Street.

	Budget	Actual	Balance
Engineering/ Inspection/ Administrative	\$537,798	\$104,189	\$433,609
Construction	\$2,151,194	\$	\$2,151,191
TOTAL	\$2,688,989	\$104,189	\$2,584,800

Second Avenue from Sunset Boulevard to Division Street



Wellesley Avenue from Maple Street to Division Street

Project #2008115

Construction Start: Spring 2010

Estimated Completion: Fall 2010

The project will be a full depth curb-to-curb rehabilitation of Wellesley Avenue from Maple Street to Division Street.

	Budget	Actual	Balance
Engineering/ Inspection/ Administrative	\$429,848	\$60,379	\$369,469
Construction	\$1,719,394	\$	\$1,719,394
TOTAL	\$2,149,242	\$60,379	\$2,088,863

Wellesley Avenue from Maple Street to Division Street



RESIDENTIAL

A Street from Francis Avenue to Beacon Avenue, et al.

Project #2009132

Construction Start: Spring 2010

Estimated Completion: Fall 2010

The project will be a full depth curb-to-curb rehabilitation of A Street from Francis Avenue to Beacon Avenue and the following residential streets Audobon Street from Holyoke Avenue to Beacon Avenue; Holyoke Avenue from Indian Trail Road to Lindeke Street; Houston Avenue from Holyoke Avenue to Lindeke Street; and Lindeke Street from Francis Avenue to Beacon Avenue.

	Budget	Actual	Balance
Engineering/ Inspection/ Administrative	\$361,602	\$4,390	\$357,212
Construction	\$1,446,406	\$	\$1,446,406
TOTAL	\$1,808,008	\$4,390	\$1,803,618

A Street from Francis Avenue to Beacon Avenue, et al.



Addison Street and Standard Street from Francis Avenue to Colton Street

Project #2009065

Construction Start: Spring 2010

Estimated Completion: Fall 2010

The project will be a full depth curb-to-curb rehabilitation of Addison Street and Standard Street from Francis Avenue to Colton Street; and Beacon Avenue from Dakota Street to Nevada Street.

	Budget	Actual	Balance
Engineering/ Inspection/ Administrative	\$272,369	\$110,704	\$161,665
Construction	\$1,089,475	\$	\$1,089,475
TOTAL	\$1,361,844	\$110,704	\$1,251,140

Addison Street and Standard Street from Francis Avenue to Colton Street



Altamont Boulevard from Ninth Avenue to 11th Avenue

Project #2008151

Construction Start: Spring 2010

Estimated Completion: Fall 2010

The project will be a full depth curb-to-curb rehabilitation of Altamont Street from Ninth Avenue to 11th Avenue and 11th Avenue from Altamont Boulevard to Julia Street.

	Budget	Actual	Balance
Engineering/ Inspection/ Administrative	\$151,835	\$	\$151,835
Construction	\$607,342	\$	\$607,342
TOTAL	\$759,177	\$	\$759,177

Altamont Boulevard from Ninth Avenue to 11th Avenue



Madison Street from Fourth Avenue to Sprague Avenue, et al.

Project #2009133

Construction Start: Spring 2010

Estimated Completion: Fall 2010

The project will be a full depth curb-to-curb rehabilitation of Madison Street from Fourth Avenue to Sprague Avenue .

	Budget	Actual	Balance
Engineering/ Inspection/ Administrative	\$226,199	\$25,657	\$200,842
Construction	\$904,795	\$	\$904,795
TOTAL	\$1,130,994	\$25,657	\$1,105,337

Madison Street from Fourth Avenue to Sprague Avenue



Nelson Street from Mission Avenue to Marshall Avenue, et al.

Project #2009131

Construction Start: Spring 2010

Estimated Completion: Fall 2010

The project will be a full depth curb-to-curb rehabilitation of Nelson Street from Mission Avenue to Marshall Avenue and surrounding residential streets Indiana Avenue from Lacey Street to Regal Street; Marshall Avenue from Nelson Street to Regal Street; Nora Avenue from Lacey Street to Regal Street; Regal Street from Mission Avenue to Marshall Street; South Crescent Avenue from Lacey Street to Ermina Avenue.

	Budget	Actual	Balance
Engineering/ Inspection/ Administrative	\$297,001	\$17,000	\$280,001
Construction	\$1,188,003	\$	\$1,188,003
TOTAL	\$1,485,004	\$17,000	\$1,468,004

Nelson Street from Mission Avenue to Marshall Avenue, et al.



Thurston Avenue from Arthur Street to Crestline Street, et al.

Project #2009130

Construction Start: Spring 2010

Estimated Completion: Fall 2010

The project will be a full depth curb-to-curb rehabilitation of Thurston Avenue from Arthur Street to Crestline Street and surrounding residential streets Crestline Street from Thurston Avenue to 39th Avenue; Helena, Hogan and Madelia Streets from 42nd Avenue to Thurston Avenue; Hogan Street from 42nd Avenue to Thurston Avenue; Napa Street from 44th Avenue to 37th Avenue; Perry Street from 45th Avenue to Thurston Avenue; and Pittsburg Street from 44th Avenue to 37th Avenue.

	Budget	Actual	Balance
Engineering/ Inspection/ Administrative	\$354,000	\$27,787	\$326,213
Construction	\$1,416,362	\$	\$1,416,362
TOTAL	\$1,770,452	\$27,787	\$1,742,665

Thurston Avenue from Arthur Street to Crestline Street, et al.



37th Avenue from Grand Street to Perry Street

Project #2007147

Construction Start: Spring 2010

Estimated Completion: Fall 2010

The project will be a full depth curb-to-curb rehabilitation of 37th Avenue from Grand Street to Perry Street including installation of new curbs and sidewalks.

	Budget	Actual	Balance
Engineering/ Inspection/ Administrative	\$132,845	\$129,710	\$3,135
Construction	\$531,379	\$	\$531,379
TOTAL	\$664,224	\$129,710	\$534,514

37th Avenue from Grand Street to Perry Street



UTILITY MATCH

Hartson Avenue Water Main

Project #2008151

Construction Start: Spring 2010

Estimated Completion: Fall 2010

The project will pave half of the street on Ninth Avenue from Perry Street to Altamont Street; Arthur Street from Eighth Avenue to Ninth Avenue; Myrtle Street from Eighth Avenue to Hartson Avenue; and Hartson Avenue from Myrtle Street to Havana Street. The Water Department will pave the other half of the street as part of the Hartson Avenue and 11th Avenue Water Transmission Main project so the street will be repaired curb-to-curb.

	Budget	Actual	Balance
Project Cost	\$ 3,227,000	\$	\$
Bond Contribution	\$ 578,000	\$	\$

Hartson Avenue Water Main



LOCAL IMPROVEMENT DISTRICT (LID)

Bennett Avenue from Clarke Street to Spruce Street

Project #2008056

Construction Start: March 2010

Estimated Completion: April 2010

The project will pave and install curbs and sidewalks of Bennett Avenue from Clarke Street to Spruce Street; and Spruce Street from Bennett Avenue to Clarke Street.

	Budget	Actual	Balance
Project Cost	\$337,216	\$	\$337,216
Bond Contribution	\$112,411	\$	\$112,411

Bennett Avenue from Clarke Street to Spruce Street



Decatur Avenue from Freya Street to Julia Street

Project #2008126

Construction Start: Spring 2010

Estimated Completion: Fall 2010

The project will pave and install curbs and sidewalks of Decatur Street from Freya Street to Julia Street; and Julia Street from Francis Avenue to Decatur Avenue.

	Budget	Actual	Balance
Project Cost	\$776,780	\$	\$776,780
Bond Contribution	\$263,533	\$	\$263,533

Decatur Avenue from Freya Street to Julia Street



16th Avenue and 17th Avenue from Chestnut Street to Inland Empire Way

Project #2009048

Construction Start: Spring 2010

Estimated Completion: Fall 2010

The project will pave 16th Avenue and 17th Avenue from Chestnut Street to Inland Empire Way and install curbs and sidewalks.

	Budget	Actual	Balance
Project Cost	\$747,508	\$	\$747,508
Bond Contribution	\$224,504	\$	\$224,504

16th Avenue and 17th Avenue from Chestnut Street to Inland Empire Way



APPENDIX A

CSAC Member Districts and Terms:

Members:	Representing:	Terms:
Phil Barto	District 3	12/31/11
Dallas Hawkins	District 2	12/31/12
Donna Jilbert	District 1	12/31/12
Gary Proctor	District 3	12/31/14
Max Kuney	District 2	12/31/09
Kathy Miotke	At Large	12/31/10
Stan Stirling	District 1	12/31/10
Hal Ellis	Liaison to Community Assembly	

APPENDIX B

10-Year Street Plan for Rehabilitation of ARTERIAL STREETS & PUBLIC SAFETY CORRIDORS Paves 38 Miles

ACTUAL COMPLETION	ORIGINAL PROJECTED COMPLETION					
		Project	From	To	Cost	Comments
2005	2006-2007	Ash St./Maple St.	Wellesley Ave. REVISED	Cedar Rd. REVISED	\$4,920,000	Advanced to get head start on Bond projects.
2005	2006-2007	Greene St.	192' N of Mission Ave.	Bridge End (S)	\$ 950,000	
				Subtotal	\$5,870,000	
2006	2006-2007	Bernard St.	29th Ave.	14th Ave.	\$2,270,000	
2006	2006-2007	Freya St.	37th Ave.	Hartson Ave. REVISED.	\$2,350,000	
2006	2006-2007	Haven St.	Market St. south	Market St. north	\$1,320,000	
2006	2014-2015	29th Ave.	Southeast Blvd.	Grand Blvd.	\$2,170,000	Advanced to meet water line scheudle and coordinate with Southeast Blvd. project.
				Subtotal	\$8,110,000	
2007	2006-2007	Ash St./Maple St.	Northwest Blvd. REVISED	Wellesley Ave.	\$2,060,175	Advanced.
2007	2008-2009	Crestline St.	Illinois Ave.	Wellesley Ave.	\$2,550,000	Advanced.
2007	2010-2011	Sherman St.	Eighth Ave.	Third Ave.	\$1,050,000	Advanced to include in scope of consultant contract with Southeast Blvd. for efficiency.
2007	2010-2011	Southeast Blvd.	Perry St.	Sherman St.	\$890,000	Advanced to include in scope of consultant contract with Southeast Blvd. for efficiency.

ACTUAL COMPLETION	ORIGINAL PROJECTED COMPLETION					
		Project	From	To	Cost	Comments
2007	2010-2011	Washington St.	Boone Ave. REVISED	Buckeye Ave.	\$910,000	To meet with Federally funded project from Boone Ave. to Buckeye Ave.
2007	2014-2015	29th Ave.	Southeast Blvd.	Freya St.	\$1,314,000	
				Subtotal	\$7,884,175	
2008	2008-2009	Ash St./Maple St.	Broadway Ave.	Northwest Blvd.	\$3,188,891	Advanced.
2008	2010-2011	Wall St.	Princeton Ave.	Francis Ave.	\$940,000	Advanced.
2008	2010-2011	Hatch Rd.	54th Ave.	43rd Ave.	\$1,570,000	Advanced.
				Subtotal	\$5,698,891	
2009	2010-2011	Alberta St./Cochran St.	Northwest Blvd.	Francis Ave.	\$3,380,000	Advanced.
2009	2010-2011	Market St.	Garland Ave.	Francis Ave.	\$2,620,000	Advanced.
2009	2008-2009	Southeast Blvd.	29th Ave.	Perry St.	\$1,280,000	
2009	2010-2011	37th Ave.	Perry St.	Regal St.	\$1,320,000	Advanced.
				Subtotal	\$8,600,000	
PROPOSED COMPLETION	ORIGINAL PROJECTED COMPLETION					
		Project	From	To	Cost	Comments
2010	2010-2011	Hatch Rd.	57th Ave.	54th Ave.	\$1,570,000	Advanced.
2010	2012-2013	Lincoln St.	17th Ave.	29th Ave. REVISED	\$1,368,000	Advanced and moved Monroe to Lincoln St. from 20th to 29th Avenues.
2010	2014-2015	Nevada St.	N. Foothills Dr.	Wellesley Ave. REVISED	\$912,500	Advanced
2010	2012-2013	Northwest Blvd.	Alberta St.	Maple St.	\$1,620,000	Advanced.
2010	2010-2011	Second Ave.	Sunset Blvd.	Division St.	\$940,000	Advanced and moved to Post St.

PROPOSED COMPLETION	ORIGINAL PROJECTED COMPLETION					
		Project	From	To	Cost	Comments
2010	2012-2013	Wellesley Ave.	Maple St.	Division St. REVISED	\$1,805,000	Advanced and revised. Wellesley was shortened and divided into two sections. The other section to be built in 2011.
2010	2012-2013	37th Ave.	Grand Blvd.	Perry St.	\$580,000	Advanced.
				Subtotal	\$8,795,500	
2011	2012-2013	Grand Blvd.	High Dr.	29th Ave.	\$1,300,000	Combined with High Dr.
2011		High Dr.	Scott Rd.	Grand Blvd.	\$507,975	Added and combined with Grand Blvd.
2011	2014-2015	Mission Ave.	Napa St. (S)	Greene St.	\$1,420,000	Advanced.
2011	2012-2013	Post St.	Maxwell Ave.	Cleveland Ave. (W)	\$1,710,000	Advanced.
2011	2012-2013	Second Ave.	Division St.	Arthur St.	\$2,520,000	Advanced.
2011	2012-2013	Wellesley Ave.	Milton St.	Ash St. REVISED	\$1,805,000	Advanced.
				Subtotal	\$9,262,975	
2012	2012-2013	Euclid Ave.	Crestline St.	Market St.	\$1,110,000	
2012	2014-2015	High Dr.	Grand Blvd.	29th Ave.	\$2,220,000	Advanced.
2012	2014-2015	Nevada St.	Wellesley Ave.	Francis Ave. REVISED	\$912,500	Advanced
2012	2012-2013	Third Ave.	Division St.	Arthur St.	\$1,330,000	
				Subtotal	\$5,572,500	
2013	2008-2009	Francis Ave.	Division St.	Helena St.	\$2,265,000	Delayed pending recommendations from North Side Transportation Study.
2013	2014-2015	29th Ave.	High Dr.	Grand Blvd.	\$2,220,000	Advanced.
				Subtotal	\$4,485,000	
2014	2008-2009	Francis Ave.	Helena St.	Market St.	\$2,265,000	
				Subtotal	\$2,265,000	
				TOTAL	\$64,054,041	

10-Year Street Plan for Rehabilitation of

RESIDENTIAL STREETS Paves 51 Miles

ACTUAL COMPLETION	ORIGINAL PROJECTED COMPLETION					
		Project	From	To	Cost	Comments
2006	2006-2007	G St.	Northwest Blvd.	Wellesley Ave.	\$648,000	
		C St.	Walton Ave.	Hoffman Ave.	\$265,000	
		Heroy Ave.	G St.	A St.	\$279,000	
		Hoffman Ave.	G St.	Alberta St.	\$419,000	
		Princeton Ave.	G St.	C St.	\$197,000	
				Subtotal	\$1,808,000	
2006	2006-2007	37th Ave.	Bernard St.	Grand Blvd.	\$722,000	
		39th Ave.	Browne St.	Grand Blvd.	\$356,000	
		40th Ave.	Browne St.	Lamonte St.	\$408,000	
		Manito Blvd.	High Dr.	37th Ave.	\$41,000	
		Skyview Dr. N.	High Dr.	37th Ave.	\$36,000	
		Skyview Dr. S.	High Dr.	Manito Blvd.	\$21,000	
		Tekoe St.	40th Ave.	37th Ave.	\$70,000	
				Subtotal	\$1,654,000	
2007	2006-2007	Peaceful Valley, et al.				
		First Ave.	Poplar St.	Maple St.	\$400,000	
		Second Ave.	Coeur d'Alene St.	Maple St.	\$366,000	
		Riverside Ave.	Bridge End	Hemlock St.	\$184,000	
				Subtotal	\$950,000	
2007	2006-2007	Regal St., et al.	Hoffman Ave.	Queen Ave.	\$55,000	
		Cook St.	Hoffman Ave.	Wellesley Ave.	\$23,000	
		Hoffman Ave.	Crestline St.	Haven St.	\$487,000	
		Lacey St.	Hoffman Ave.	Queen Ave.	\$125,000	
		Nelson St.	Wellesley Ave.	Queen Ave.	\$150,000	
		Queen Ave.	Lacey St.	Regal St.	\$116,000	
		Regal St.	Hoffman Ave.	Queen Ave.	\$55,000	
		Smith St.	Wellesley Ave.	Queen Ave.	\$166,000	
		Stone St.	Hoffman Ave.	Wellesley Ave.	\$19,000	
		Wabash Ave.	Smith St.	Haven St.	\$185,000	
				Subtotal	\$1,381,000	

ACTUAL COMPLETION	ORIGINAL PROJECTED COMPLETION					
		Project	From	To	Cost	Comments
2008	2008-2009	Belt St., et al.	Nora Ave.	Montgomery Ave.	\$220,000	
		Buell Ct.	Hemlock St.	Montgomery Ave.	\$78,000	
		Cannon St.	Nora Ave.	Montgomery Ave.	\$164,000	
		Indiana Ave.	Hemlock St.	Ash St.	\$357,000	
		Knox Ave.	Belt St.	Cul-de-sac	\$112,000	
		Mansfield Ave.	Belt St.	Elm St.	\$143,000	
		Montgomery Ave.	Nettleton St.	Belt St.	\$80,000	
		Nora Ave.	Hemlock St.	Ash St.	\$233,000	
		Shannon Ave.	Hemlock St.	Elm St.	\$183,000	
				Subtotal	\$1,654,000	
2008	2008-2009	Third Ave., et al.	Magnolia St.	Regal St.	\$512,000	
		Crestline St.	Fifth Ave.	Third Ave.	\$80,000	
		Fourth Ave.	Magnolia St.	Regal St.	\$467,000	
		Magnolia St.	Fifth Ave.	Third Ave.	\$82,000	
		Regal St.	Fifth Ave.	Third Ave.	\$58,000	
				Subtotal	\$1,199,000	
2009	2008-2009	Altamont Blvd., et al.	E. 2200 Altamont Blvd.	Altamont St.	\$277,000	
		Cook St.	14th Ave.	Altamont Blvd.	\$78,000	
		Ninth Ave.	Altamont Blvd.	Jaques St.	\$125,000	
		N. Altamont Blvd.	12th Ave.	Altamont St.	\$133,000	
		S. Altamont Blvd.	Cook St.	1100 S. Altamont St.	\$133,000	
		S. Altamont Blvd.	Cook St.	12th Ave.	\$106,000	
		Woodfern St.	Altamont Blvd.	Altamont Blvd.	\$107,000	
				Subtotal	\$959,000	

ACTUAL COMPLETION	ORIGINAL PROJECTED COMPLETION					
		Project	From	To	Cost	Comments
2009	2008-2009	Montgomery Ave., et al.	Astor St.	Hamilton St.	\$444,330	
		Addison St.	Indiana Ave.	Montgomery Ave.	\$171,160	
		Baldwin Ave.	Astor St.	Perry St.	\$348,035	
		Cincinnati St.	Indiana Ave.	Montgomery Ave.	\$95,000	
		Dakota St.	Indiana Ave.	Illinois Ave.	\$223,785	
		Ermina Ave.	Pearl St.	Columbia Ave.	\$224,705	
		Illinois Ave.	Dakota St.	Cincinnati St.	\$159,618	
		Standard St.	Indiana Ave.	Montgomery Ave.	\$175,600	
				Subtotal	\$1,842,233	
2010	2010-2011	Addison/ Standard St.	Francis Ave.	Colton Ave.	\$1,233,000	
				Subtotal	\$1,233,000	
2010	2010-2011	N. Altamont St.	11th Ave.	Ninth Ave.	\$94,165	
		11th Ave.	Altamont Blvd.	Julia St.	\$539,180	
				Subtotal	\$ 633,345	
2010	2014-2015	A St.	Francis Ave.	Beacon Ave.	\$359,000	
		Audobon St.	Holyoke Ave.	Beacon Ave.	\$161,000	
		Beacon Ave.	Audobon St.	Alberta St.	\$453,000	
		Holyoke Ave.	Indian Trail Rd.	Lindeke St.	\$460,000	
		Houston Ave.	Holyoke St.	Lindeke St.	\$344,000	
		Lindeke St.	Francis Ave.	Beacon Ave.	\$297,000	
				Subtotal	\$2,074,000	
2010	2010-2011	Thurston Ave.	Arthur St.	Crestline St.	\$666,000	
		Crestline St.	Thurston Ave.	37th Ave.	\$249,000	
		Helena St.	42nd Ave.	Thurston Ave.	\$115,000	
		Hogan St.	42nd Ave.	Thurston Ave.	\$44,000	
		Madelia St.	42nd Ave.	Thurston Ave.	\$115,000	
		Napa St.	44th Ave.	37th Ave.	\$352,317	
		Perry St.	45th Ave.	Thurston Ave.	\$318,000	
		Pittsburg St.	44th Ave.	37th Ave.	\$348,000	
				Subtotal	\$2,207,317	

ACTUAL COMPLETION	ORIGINAL PROJECTED COMPLETION					
		Project	From	To	Cost	Comments
2010	2014-2015	Madison St.	Fourth Ave.	Sprague Ave.	\$504,000	
		Adams St.	Third Ave. (Alley)	Sprague Ave.	\$465,000	
		Jefferson St.	Fourth Ave.	Sprague Ave.	\$504,000	
				Subtotal	\$1,473,000	
PROPOSED COMPLETION	ORIGINAL PROJECTED COMPLETION					
		Project	From	To	Cost	Comments
2011	2010-2011	Bridgeport Ave.	Division St.	Crestline St.	\$1,227,000	
		Courtland Ave.	Perry St.	Crestline St.	\$205,000	
		Glass Ave.	Perry St.	Crestline St.	\$415,000	
				Subtotal	\$ 1,847,000	
2011	2010-2011	Columbia Ave.	Post St.	Division St.	\$498,000	
		Atlantic St.	Joseph Ave.	Columbia Ave.	\$83,000	
		Beacon Ave.	Dakota St.	Nevada St.	\$186,000	
		Calispel St.	Joseph Ave.	Francis Ave.	\$159,000	
		Columbia Ave.	Post St.	Division St.	\$498,000	
		Franklin Ct.	Calispel St.	Atlantic St.	\$135,000	
		Howard St.	Rowan Ave.	Columbia Ave.	\$68,000	
		Joseph Ave.	Post St.	Division St.	\$427,000	
		Nebraska Ave.	Post St.	Division St.	\$496,000	
		Normandie St.	Nebraska Ave.	Joseph Ave.	\$44,000	
		Post St.	Rowan Ave.	Dalke Ave.	\$254,000	
		Rowan Ave.	Wall St.	Whitehouse St.	\$248,000	
		Stevens St.	Rowan Ave.	Columbia Ave.	\$154,000	
		Washington St.	Rowan Ave.	Columbia Ave.	\$97,000	
		Whitehouse St.	Rowan Ave.	Columbia Ave.	\$55,000	
				Subtotal	\$3,402,000	

PROPOSED COMPLETION	ORIGINAL PROJECTED COMPLETION					
		Project	From	To	Cost	Comments
2012	2012-2013	Adams St.	21st Ave.	15th Ave.	\$304,000	
		Jefferson St.	21st Ave.	15th Ave.	\$369,000	
		Madison St.	21st Ave.	17th Ave.	\$206,000	
		17th Ave.	Cedar St.	Madison St.	\$77,000	
		18th Ave.	Cedar St.	Madison St.	\$217,000	
		19th Ave.	Cedar St.	Madison St.	\$116,000	
		20th Ave.	Adams St.	Madison St.	\$86,000	
				Subtotal	\$1,375,000	
2012	2012-2013	Lidgerwood St.	North Ave.	Francis Ave.	\$414,000	
		Addison St.	Rowan Ave.	Columbia Ave.	\$93,000	
		Columbia Ave.	Lidgerwood St.	Cul-de-sac	\$192,000	
		Joseph Ave.	Lidgerwood St.	Cincinnati St.	\$135,000	
		Nebraska Ave.	Lidgerwood St.	Cincinnati St.	\$258,000	
		Standard St.	North Ave.	Columbia Ave.	\$82,000	
				Subtotal	\$1,174,000	
2013	2012-2013	Queen Ave.	A St.	Nettleton St.	\$227,000	
		Crown Ave.	A St.	Nettleton St.	\$388,000	
		Milton St.	Olympic Ave.	Rowan Ave.	\$222,000	
		Nettleton St.	Olympic Ave.	Rowan Ave.	\$222,000	
		Olympic Ave.	A St.	Nettleton St.	\$171,000	
		Queen Ave.	A St.	Nettleton St.	\$227,000	
				Subtotal	\$1,457,000	
2013	2012-2013	Rockwood Blvd.	Cowley St.	Crestline St.	\$1,764,000	
		Upper Terrace Rd.	Rockwood Blvd.	17th Ave.	\$141,000	
				Subtotal	\$1,905,000	
2015	2014-2015	Jefferson St.	Wellesley Ave.	Rowan Ave.	\$390,000	
		Adams St.	Wellesley Ave.	Rowan Ave.	\$328,000	
		Madison St.	Wellesley Ave.	Rowan Ave.	\$117,000	
		Wabash Ave.	Maple St.	Madison St.	\$298,000	
				Subtotal	\$1,133,000	

PROPOSED COMPLETION	ORIGINAL PROJECTED COMPLETION					
		Project	From	To	Cost	Comments
2015	2014-2015	South Riverton Ave.	Lacey St.	Ermina Ave.	\$506,000	
		Indiana Ave.	Lacey St.	Regal St.	\$116,000	
		Marshall Ave.	Nelson St.	Regal St.	\$43,000	
		Nelson St.	Mission Ave.	Marshall Ave.	\$163,000	
		Nora Ave.	Lacey St.	Regal St.	\$68,000	
		Regal St.	Mission Ave.	South Riverton Ave.	\$423,000	
		South Crescent Ave.	Lacey St.	Regal St.	\$164,000	
				Subtotal	\$1,483,000	
2015	2014-2015	14th Ave.	Lincoln St.	Division St.	\$466,000	
				Subtotal	\$466,000	
				TOTAL	\$34,077,895	